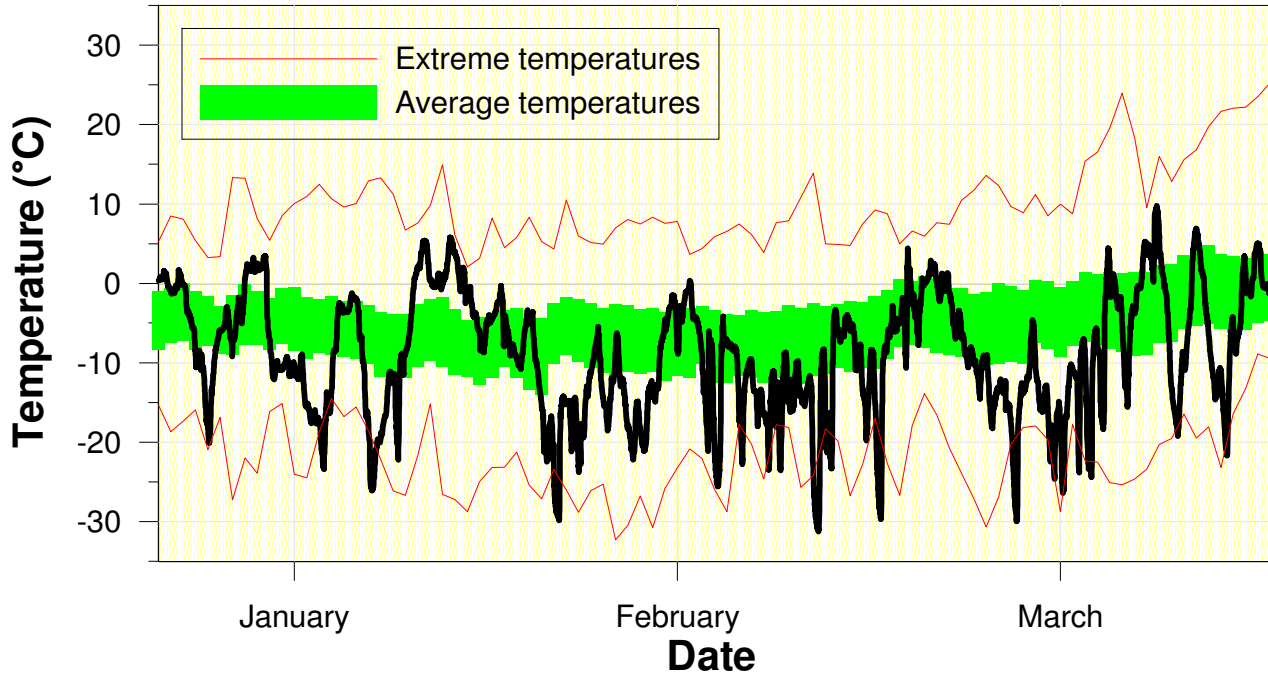


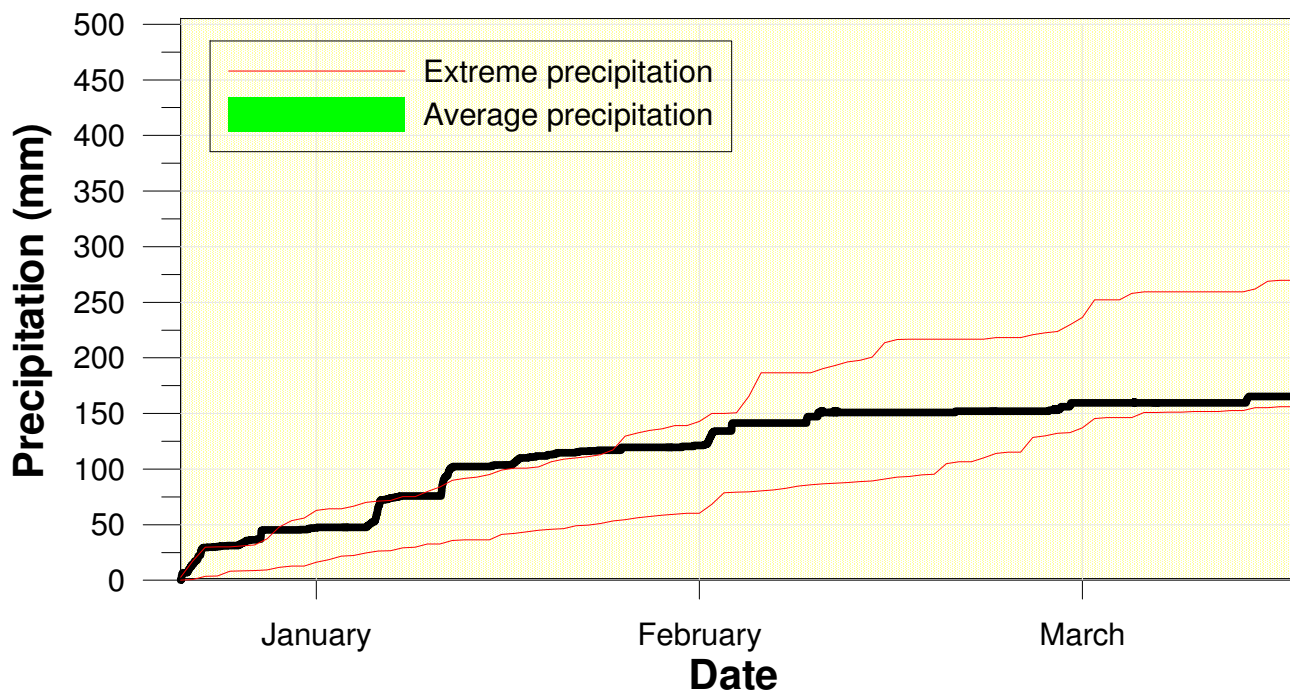
Temperature at the Waterloo Weather Station Winter 2013-2014



High/Low Temp: 9.8°C / -31.2°C
Average Daily High: -4.6°C
Average Daily Low: -14.9°C

It was a very cold winter, the coldest since 1993/94.

Precipitation at the Waterloo Weather Station Winter 2013-2014



Total precipitation
165.3 mm
(average 184.5 mm)

The first half of the winter was very wet but it was dry for the second half.