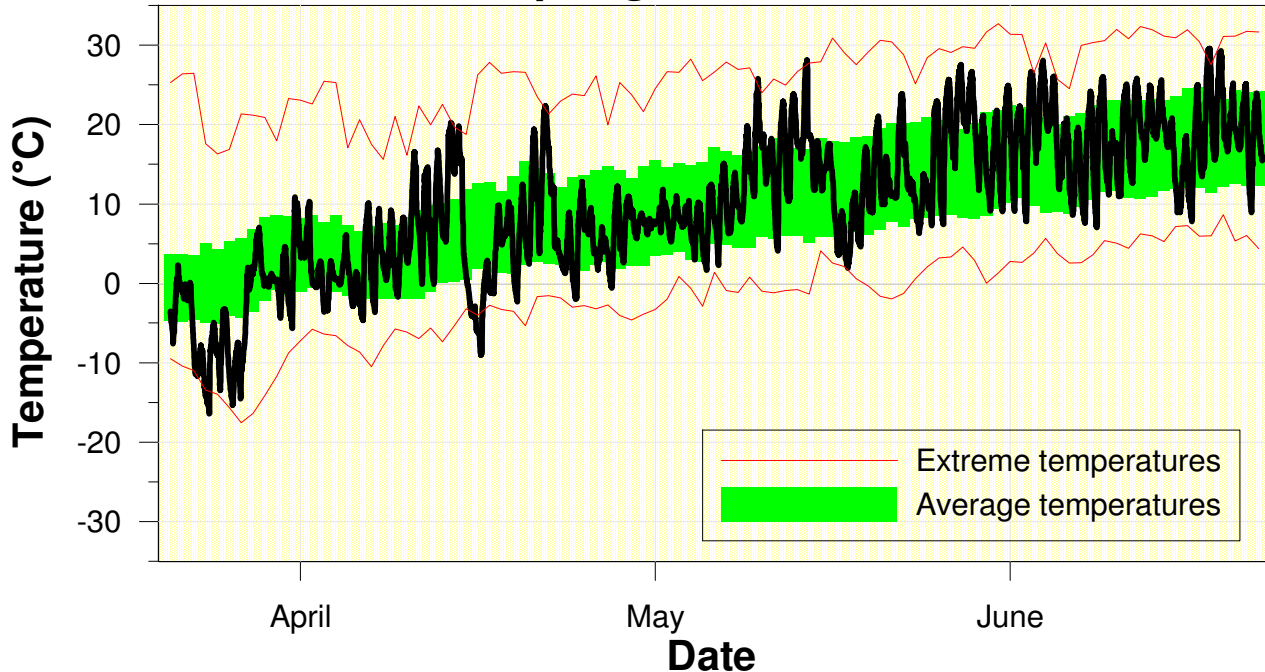


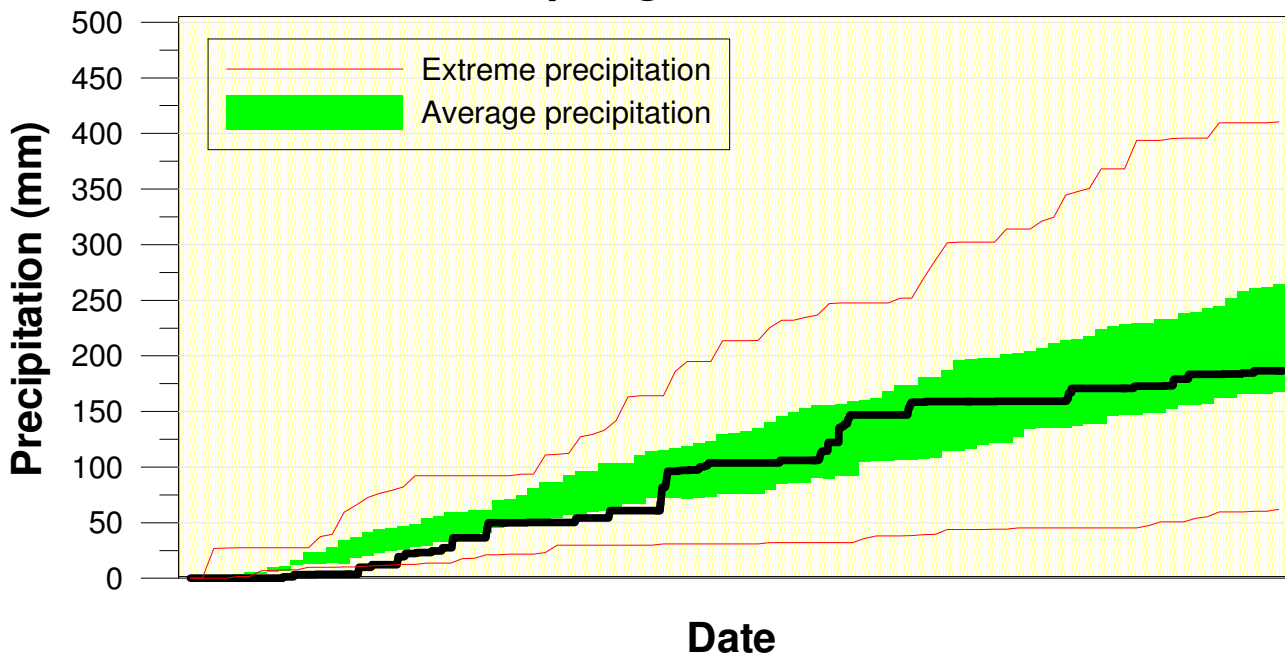
## Temperature at the Waterloo Weather Station Spring 2014



High/Low Temp: 28.1 °C/ -16.4 °C  
 Average Daily High: 13.6 °C  
 Average Daily Low: 2.7 °C

At 2 degrees below average, it was  
 the coldest spring since 1983.

## Precipitation at the Waterloo Weather Station Spring 2014



Total precipitation  
 171.0 mm  
 (average 219.5 mm)

Even though the season started off very dry,  
 the final total was within the average range.