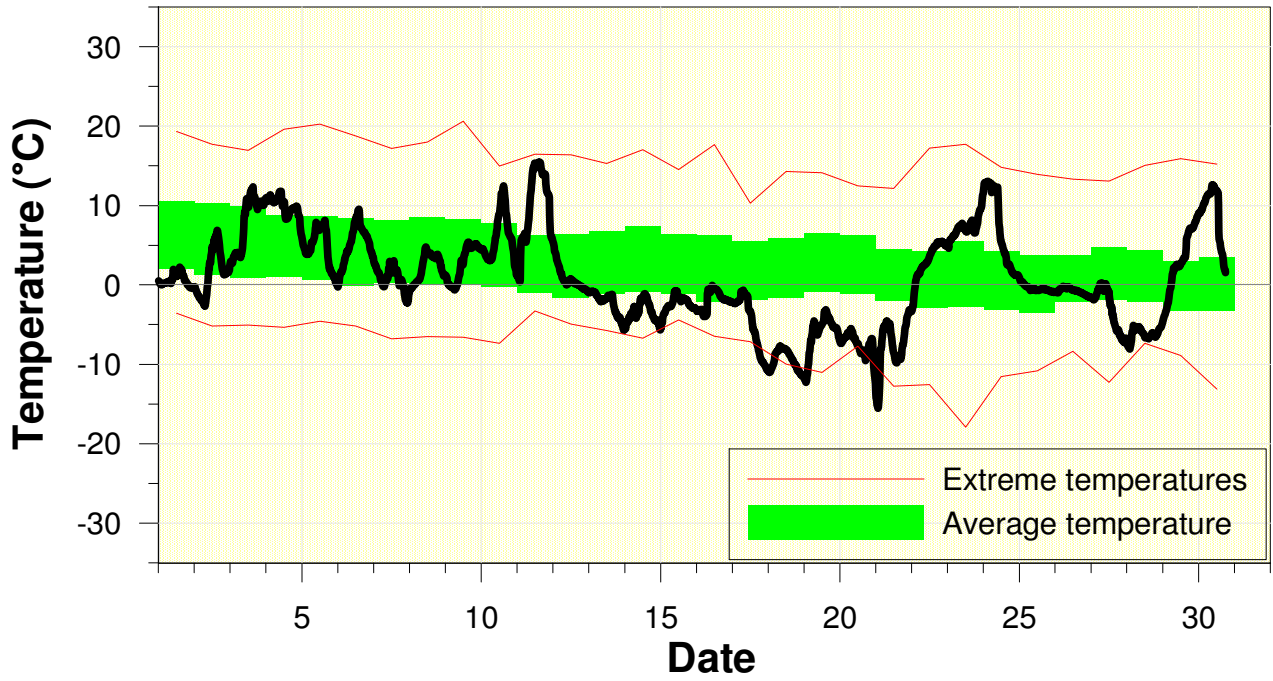


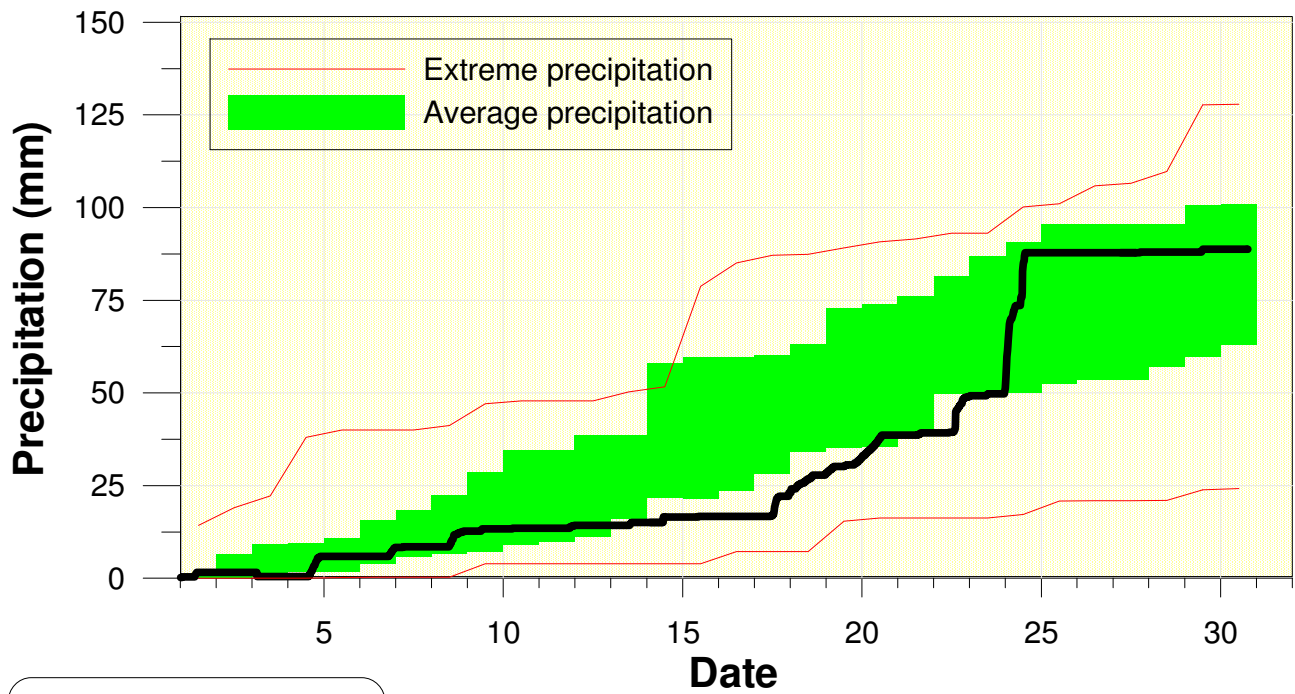
Temperature at the University of Waterloo Weather Station November 2014



High/Low Temp: 15.5°C/ -15.5°C
 Average Daily High: 3.9°C
 Average Daily Low: -3.2°C

At just over one and half degrees below average it was the coldest November since 1996.

Precipitation at the University of Waterloo Weather Station November 2014



Total precipitation
90.6 mm

Although it was a little dry for most of the month, a the 38 mm on the 24th brought us into the average range.