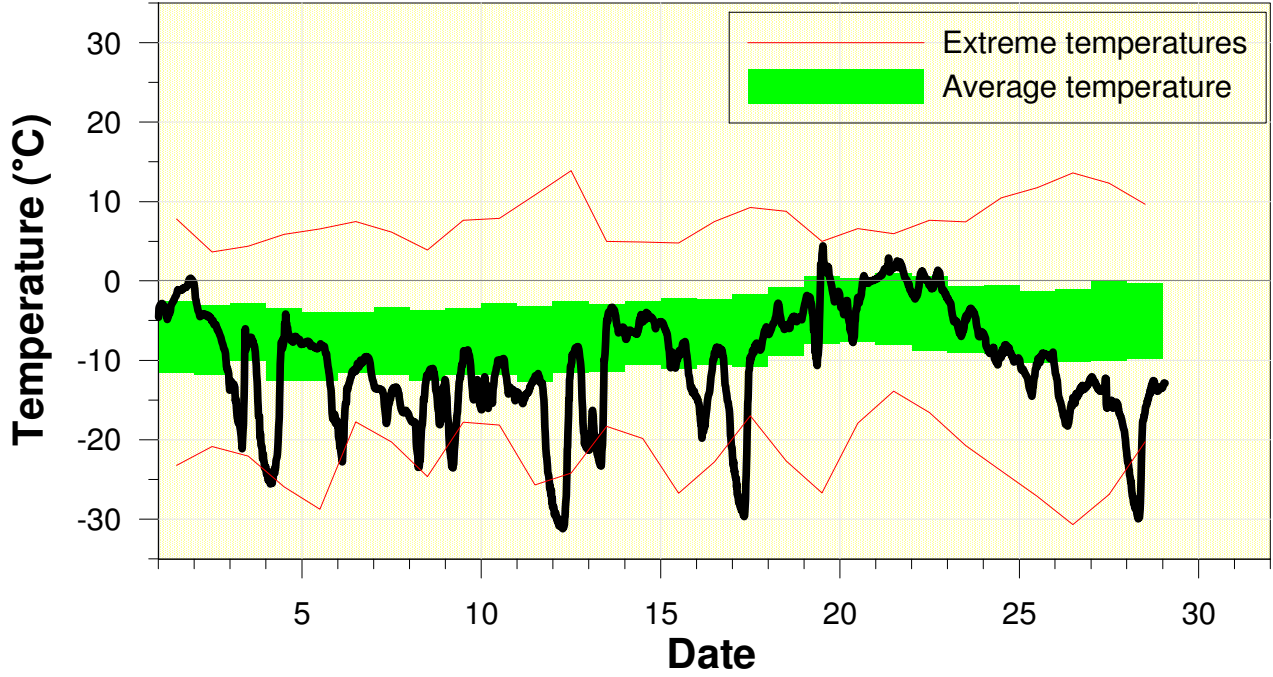


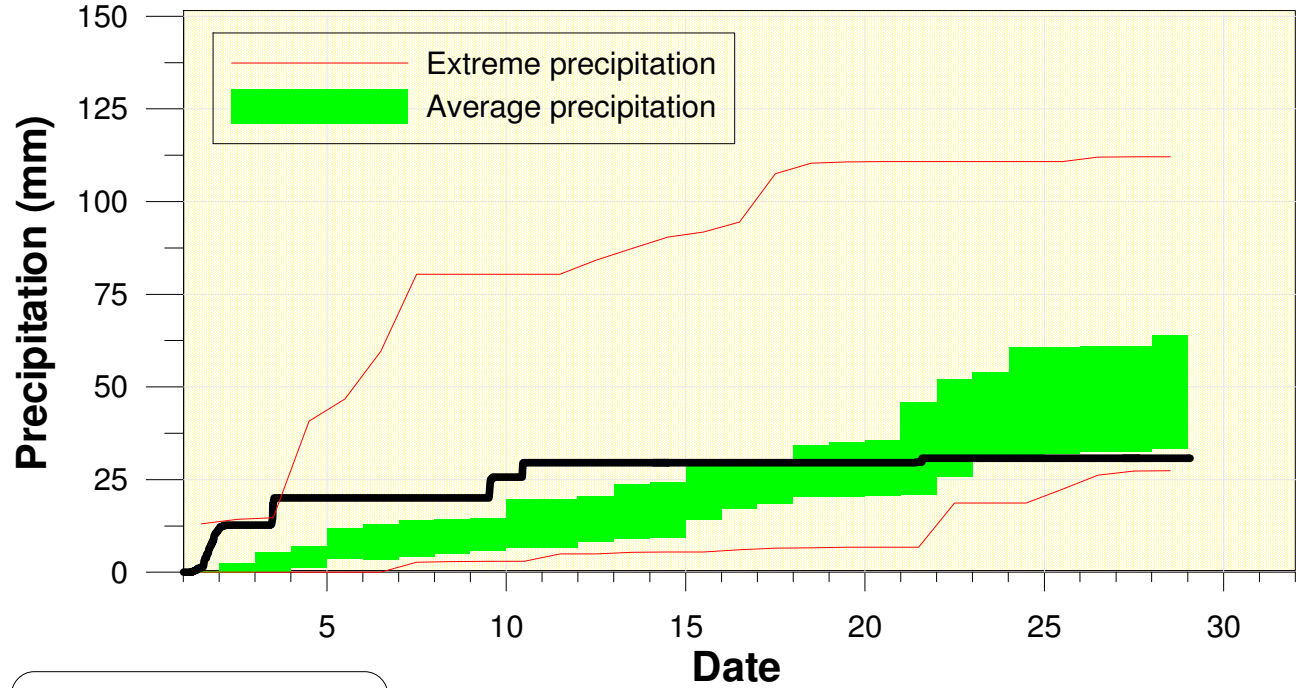
Temperature at the University of Waterloo Weather Station February 2014



High/Low Temp: 4.4°C/ -31.2°C
Average Daily High: -5.9°C
Average Daily Low: -17.2°C

It was the coldest February since 1979.

Precipitation at the University of Waterloo Weather Station February 2014



Total precipitation
30.6 mm

After a wet start, the rest of the month was pretty dry, leading to a below average month for precipitation.