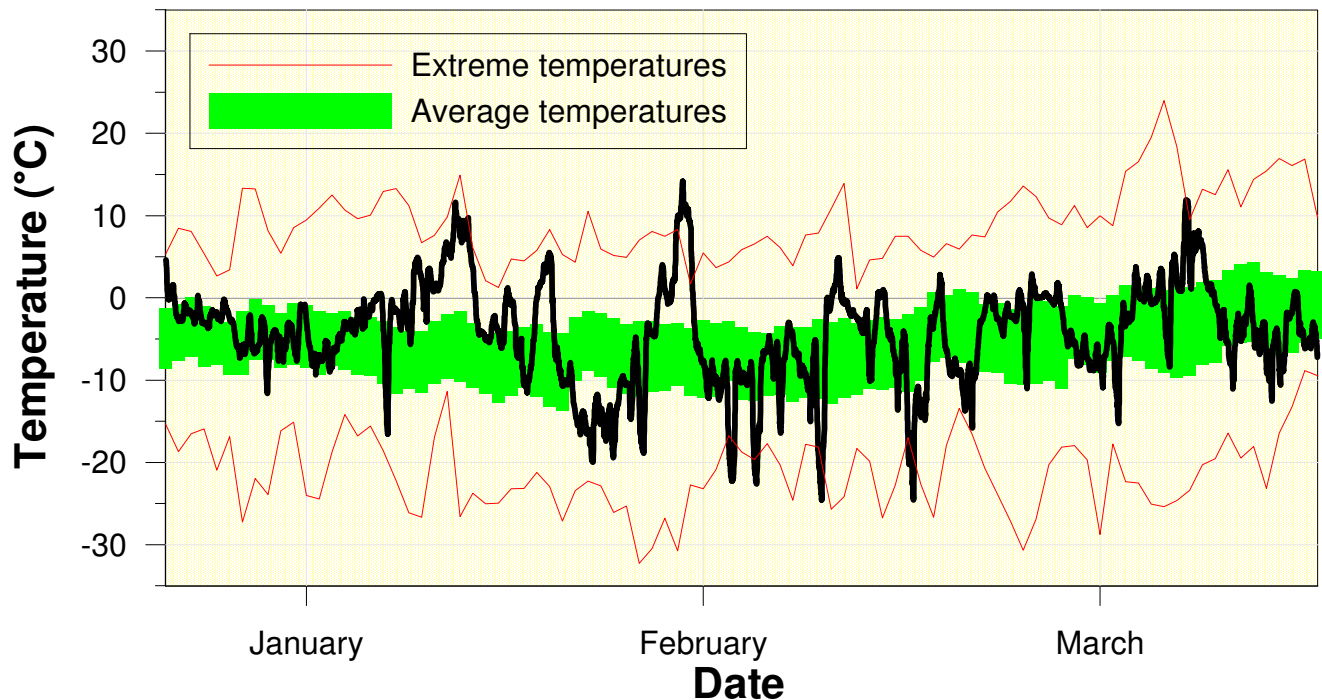


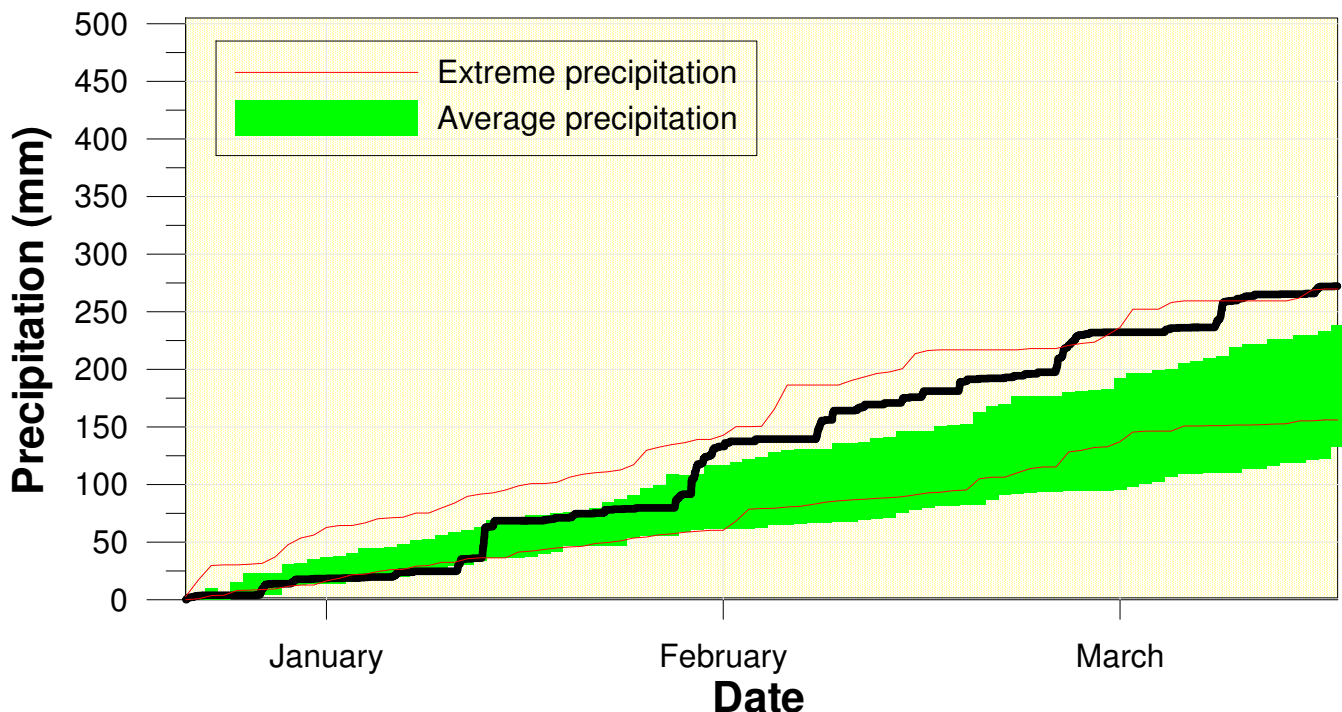
Temperature at the Waterloo Weather Station Winter 2012-2013



High/Low Temp: 14.2°C / -24.6°C
Average Daily High: -0.7°C
Average Daily Low: -8.7°C

When it was cold it was just a little cold, but when it was warm it was very warm. Overall this made it about a degree above average.

Precipitation at the Waterloo Weather Station Winter 2012-2013



Total precipitation
272.5 mm
(average 184.5 mm)

It was a very wet winter, in fact the wettest since 1973/74.