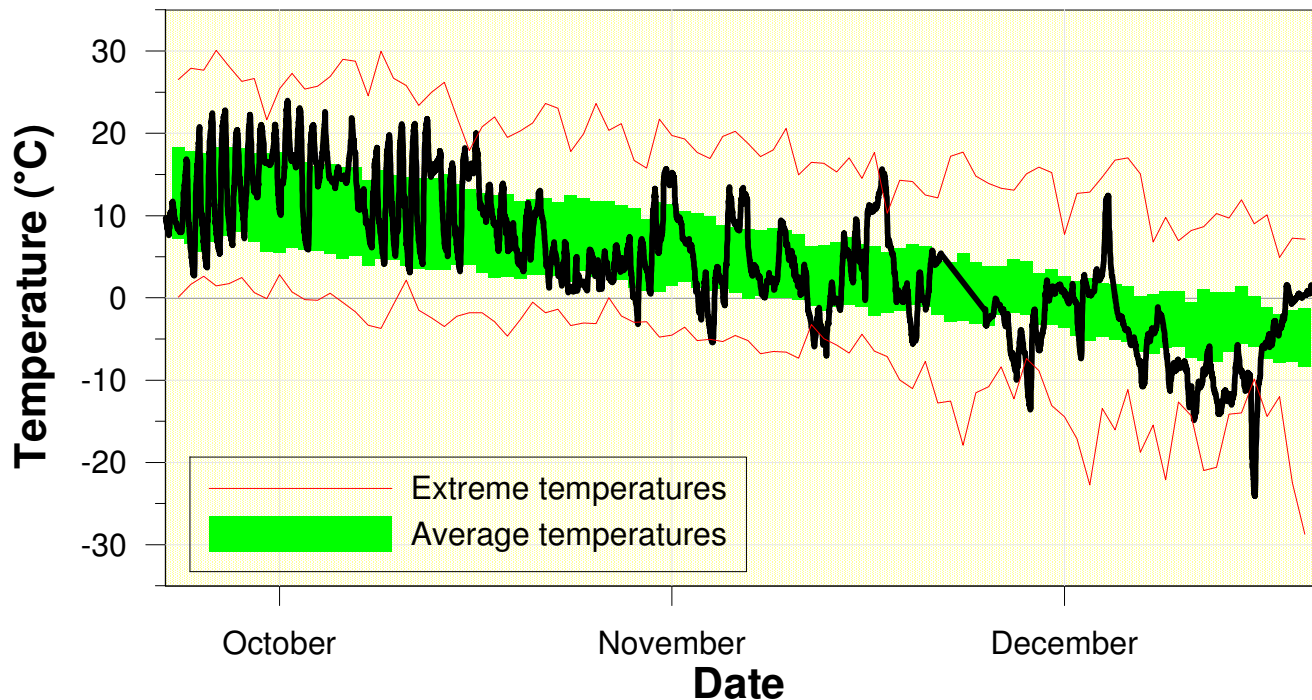


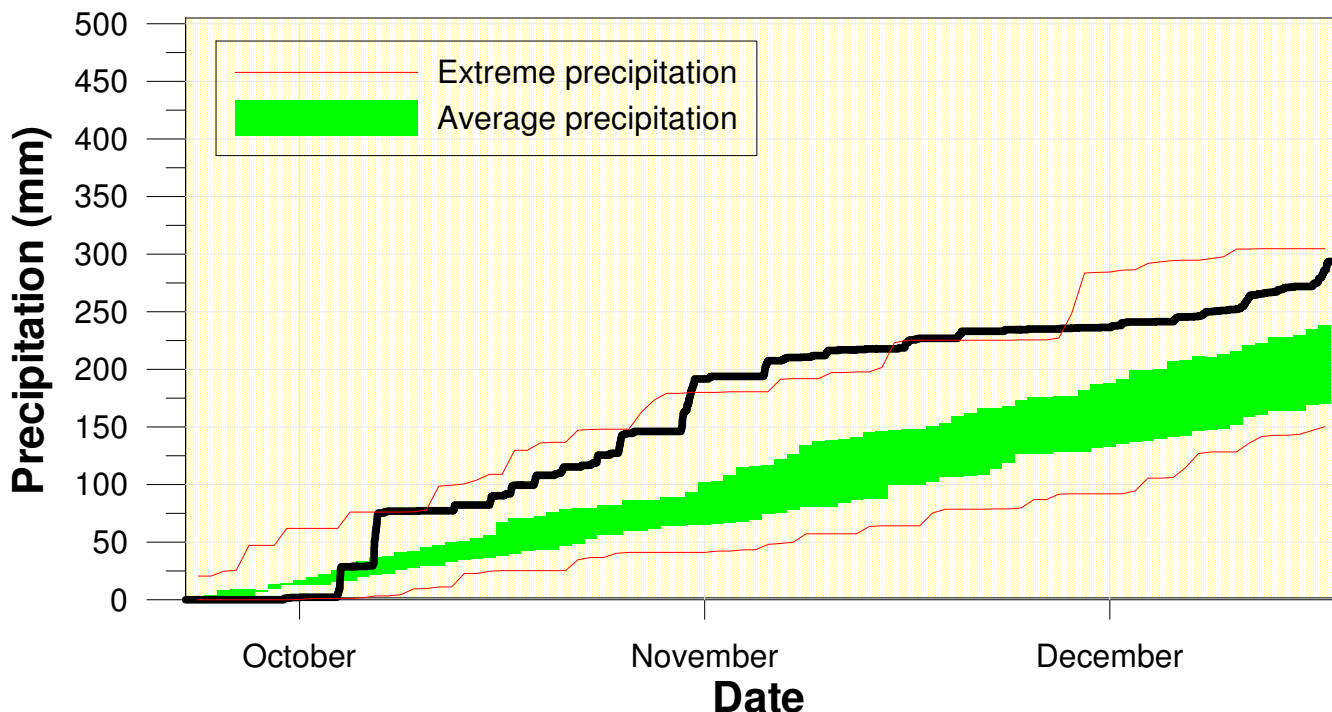
## Temperature at the Waterloo Weather Station Fall 2013



High/Low Temp: 24.0°C/-24.1°C  
Average Daily High: 8.2°C  
Average Daily Low: -0.6°C

A pretty average fall for temperature, no real long hot or cold streaks.

## Precipitation at the Waterloo Weather Station Fall 2013



Total precipitation  
282.9 mm  
(average 218.1 mm)

The season started off very dry for the first few weeks, but then got very wet and ended up above average.