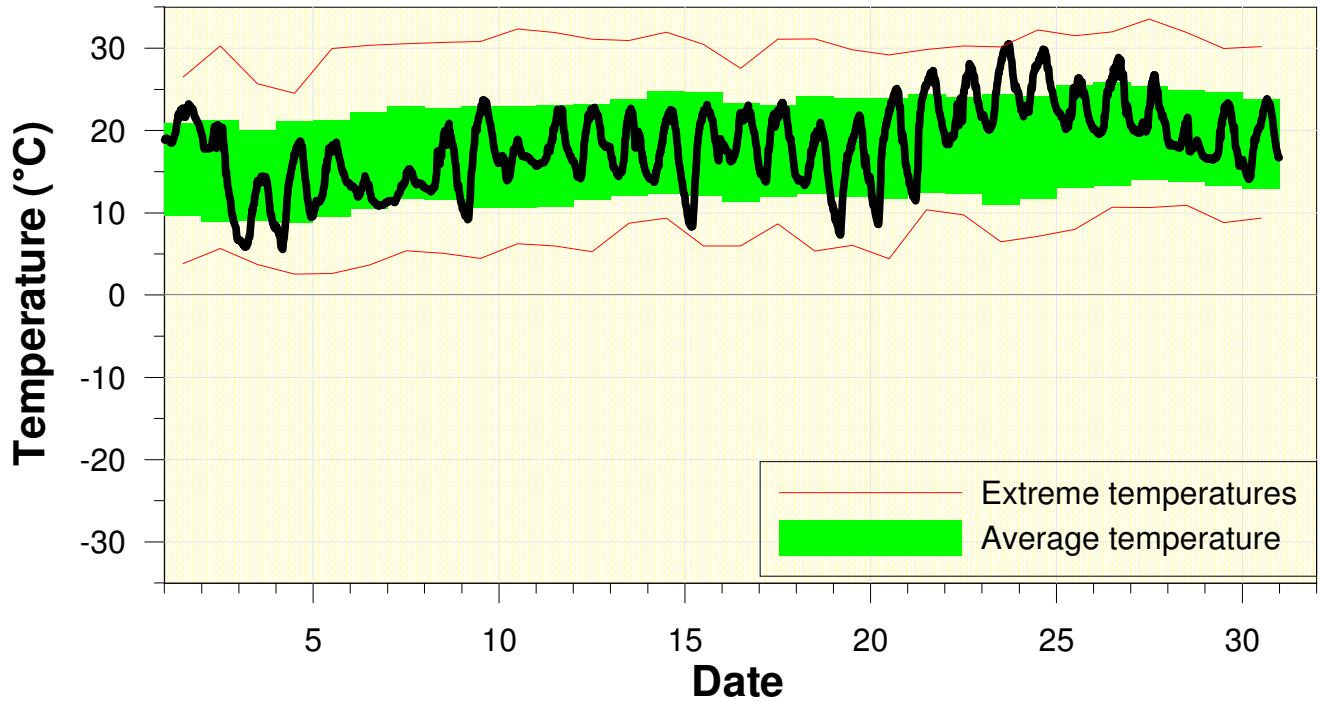


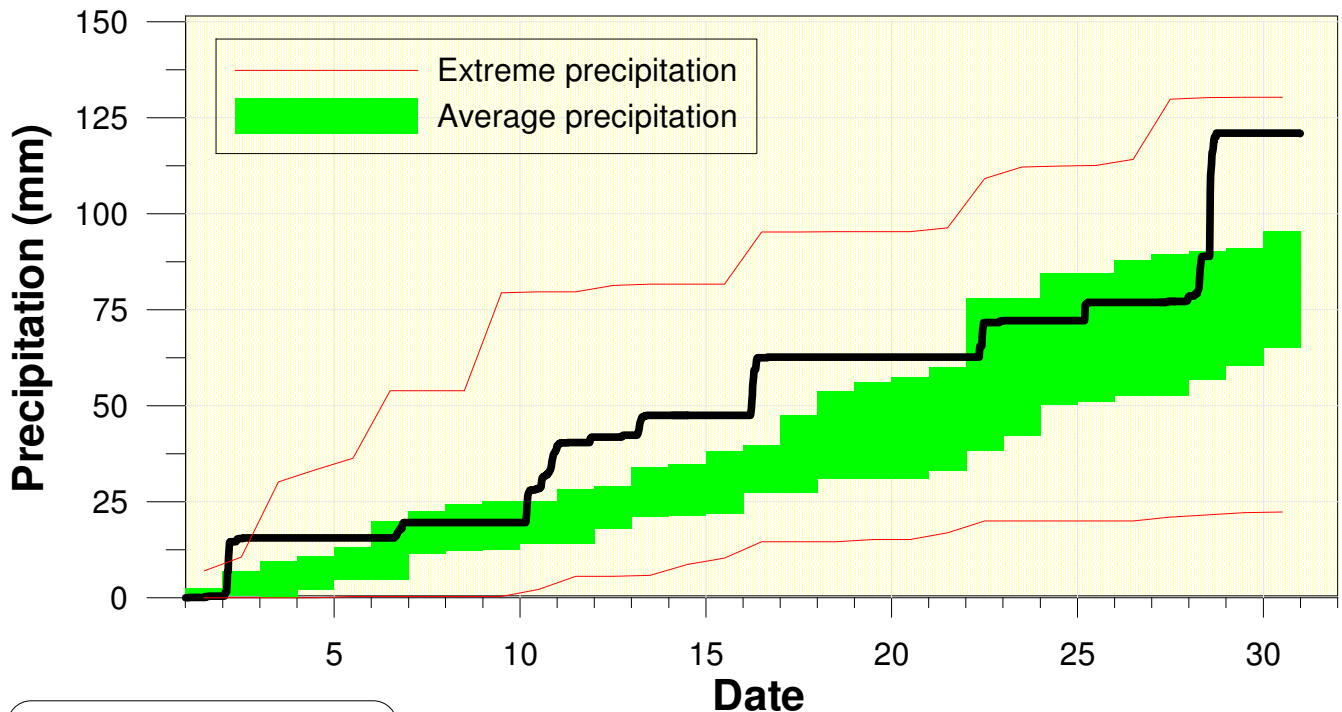
Temperature at the University of Waterloo Weather Station June 2013



High/Low Temp: 02.5°C / 5.5°C
Average Daily High: 22.8°C
Average Daily Low: 13.4°C

The first half of the month was pretty average, but a warm week near the end made it warmer than average overall.

Precipitation at the University of Waterloo Weather Station June 2013



Total precipitation
120.9 mm

It was looking like just an average month for precipitation, but then a major storm on the 28th put us well into the above average range.