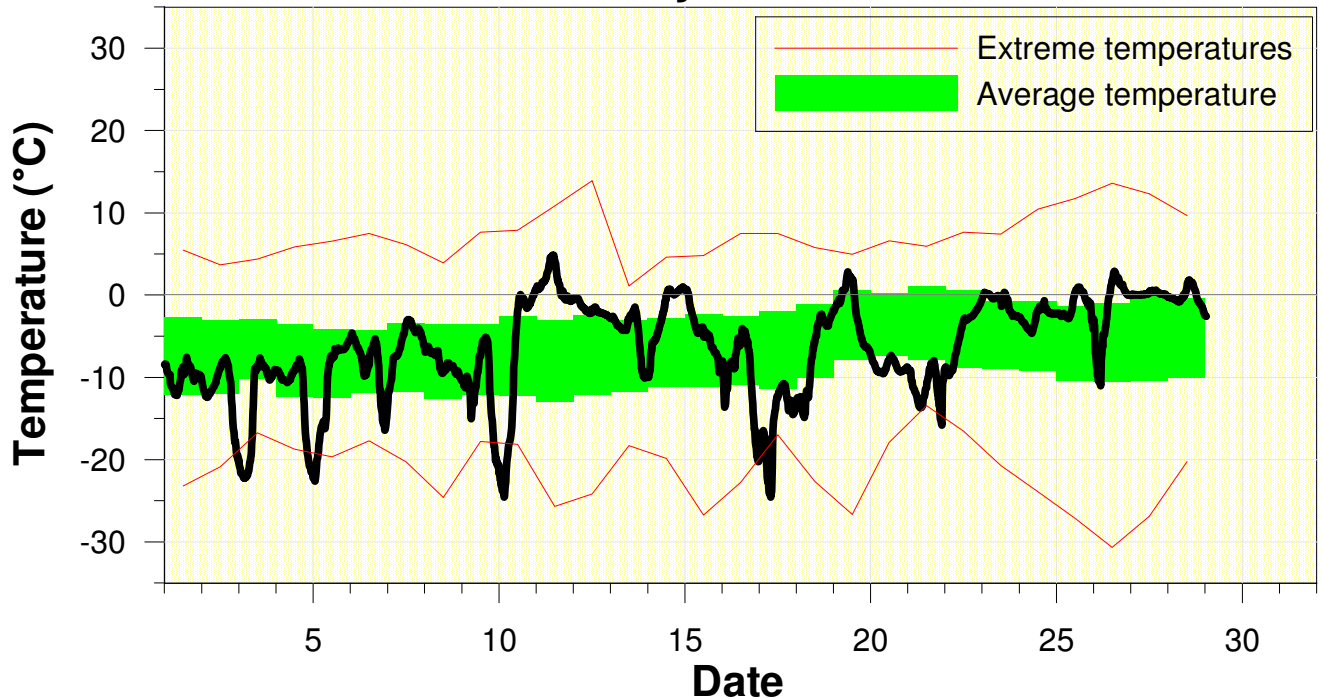


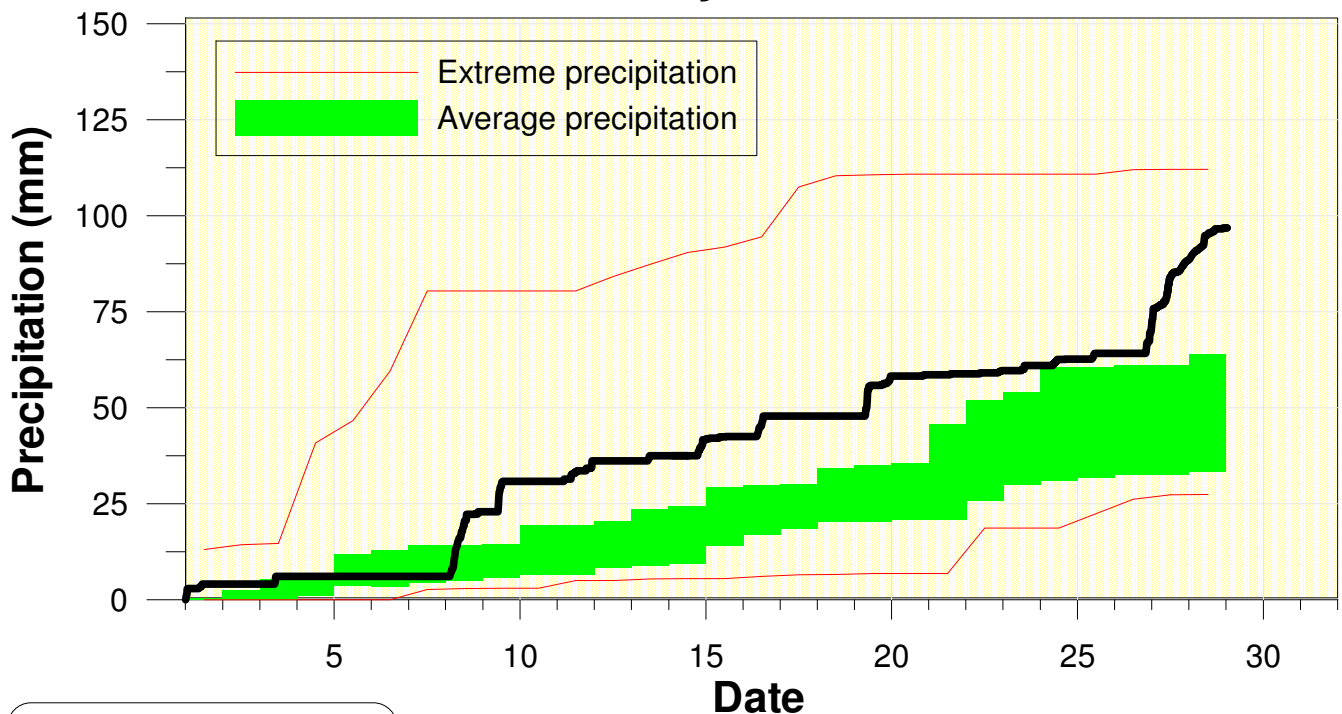
Temperature at the University of Waterloo Weather Station February 2013



High/Low Temp: 4.9°C/ -24.6°C
 Average Daily High: -2.6°C
 Average Daily Low: -12.4°C

For the first time in almost 2 years it was a colder than average month.

Precipitation at the University of Waterloo Weather Station February 2013



Total precipitation
97.5 mm

It was looking like a wet month and then the last 3 days really put it over the top.