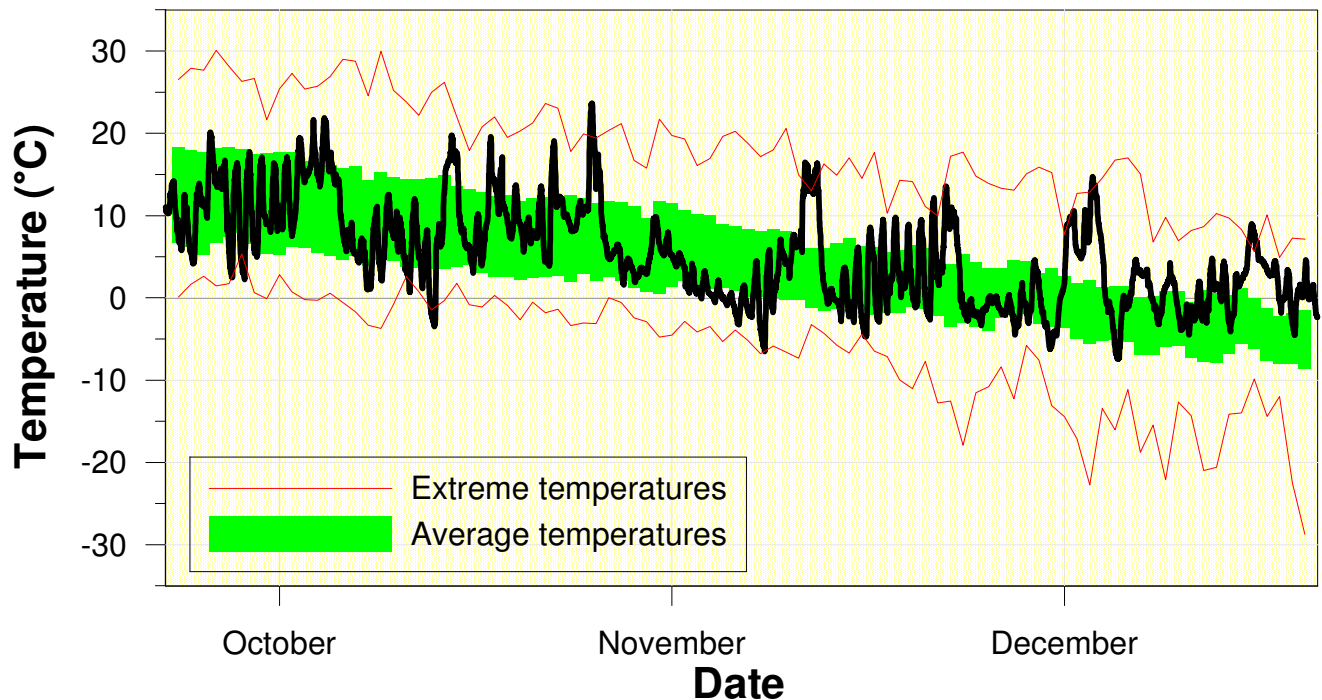


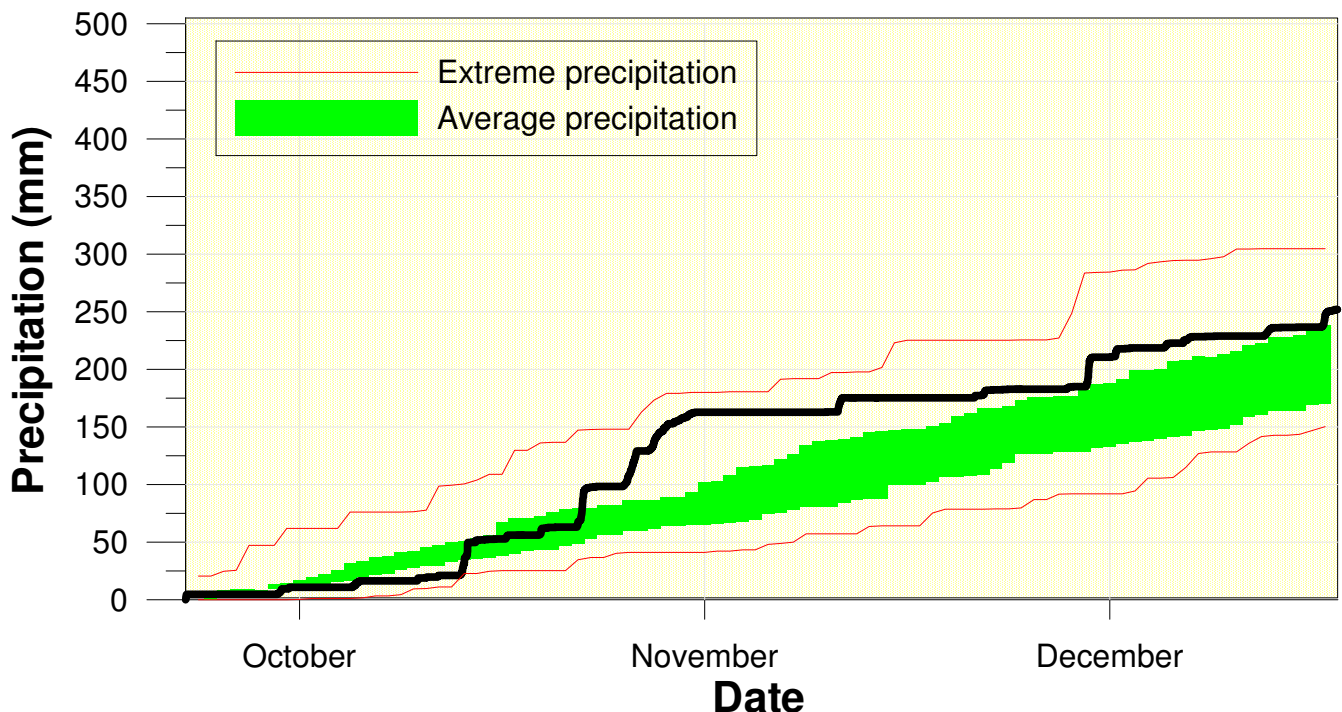
Temperature at the Waterloo Weather Station Fall 2012



High/Low Temp: 23.6 °C/-7.4 °C
Average Daily High: 9.3 °C
Average Daily Low: -1.4 °C

With only a couple of cold snaps in November, it made for a warmer than average fall.

Precipitation at the Waterloo Weather Station Fall 2012



Total precipitation
248.2 mm
(average 220.9 mm)

It was dry in November and wet the rest of the fall, resulting a just barely wetter than average season.