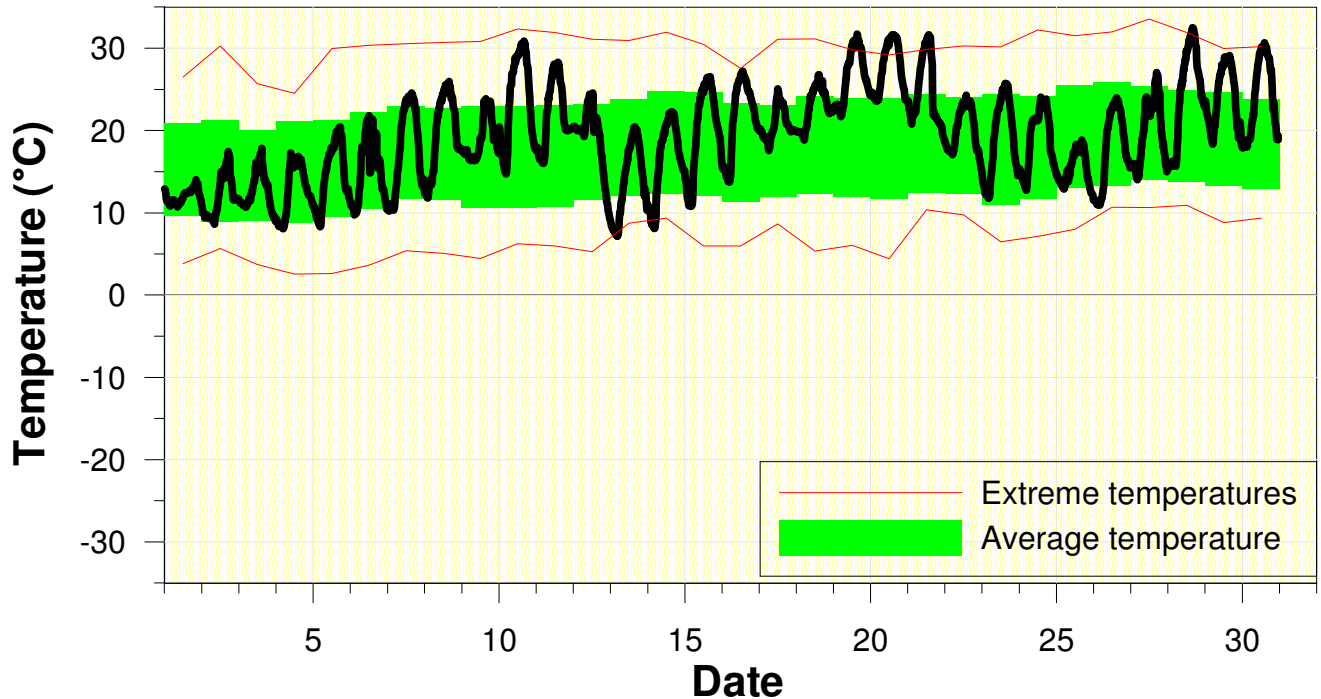


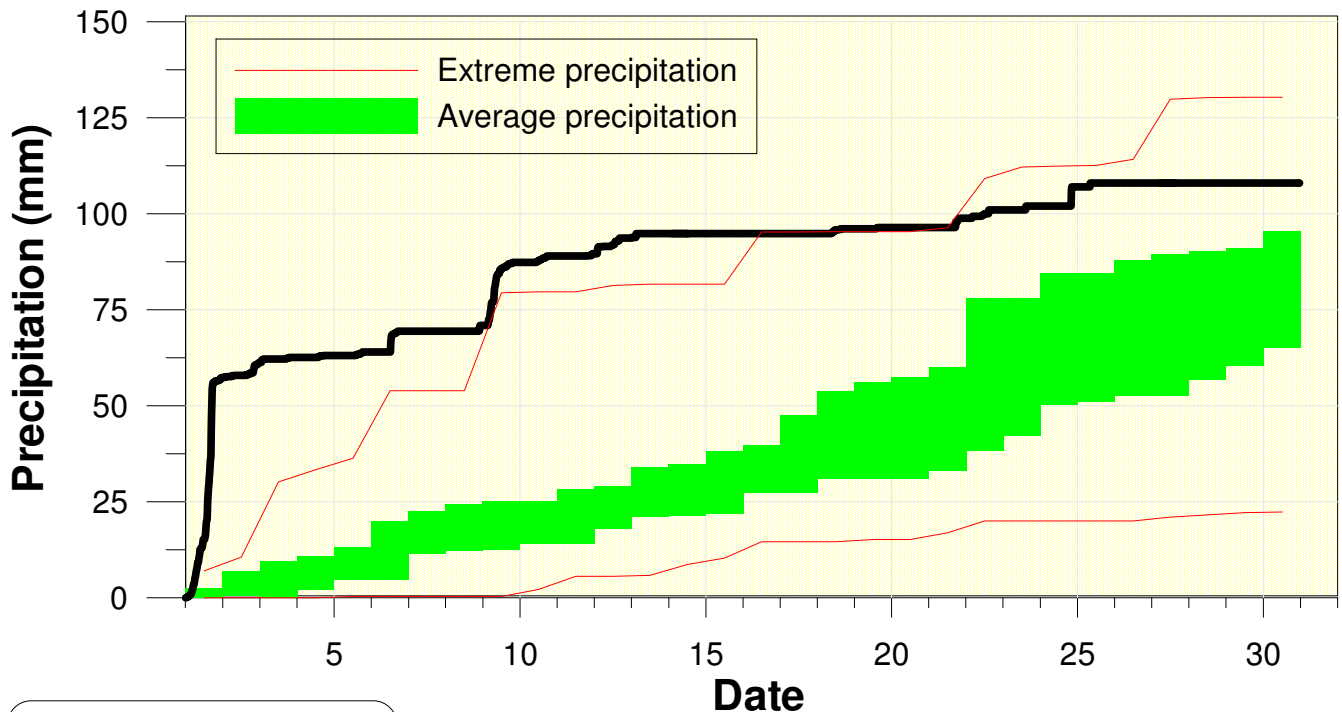
Temperature at the University of Waterloo Weather Station June 2012



High/Low Temp: 32.5°C / 7.1°C
 Average Daily High: 24.9°C
 Average Daily Low: 13.3°C

Yet another much warmer than average month with very few cold days.

Precipitation at the University of Waterloo Weather Station June 2012



Total precipitation
107.6 mm

After an incredibly wet start to the month, the rest of the month was actually pretty dry. However, overall it was still above average for precipitation.