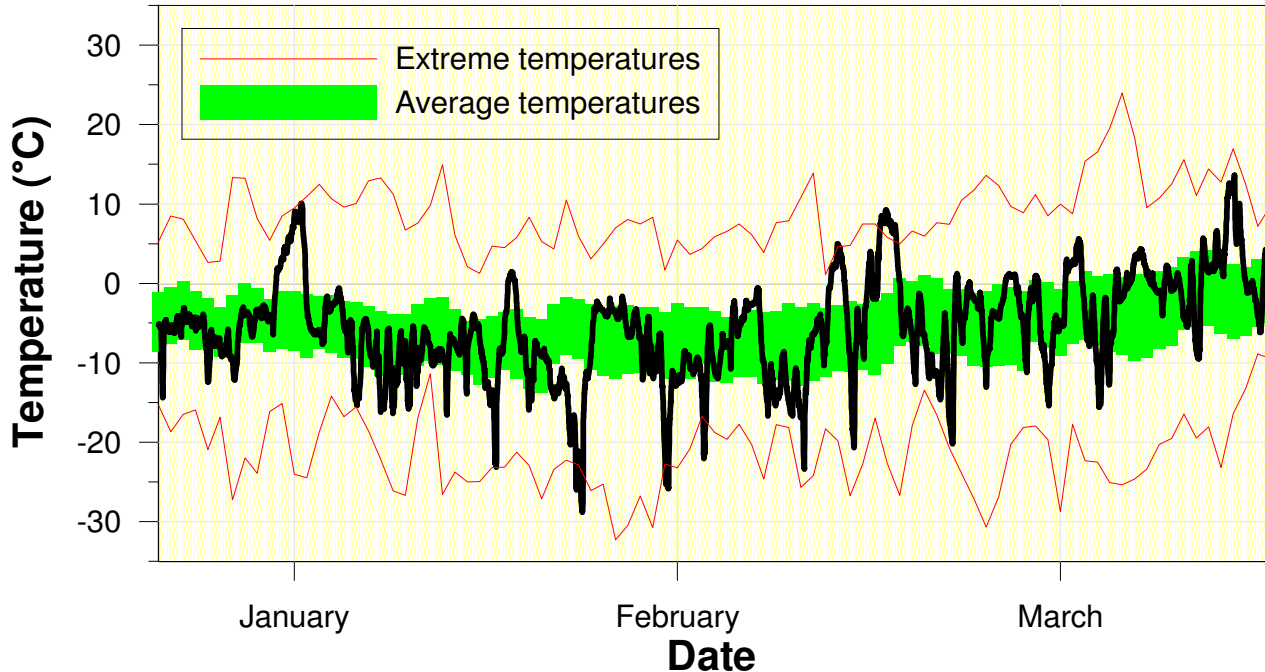


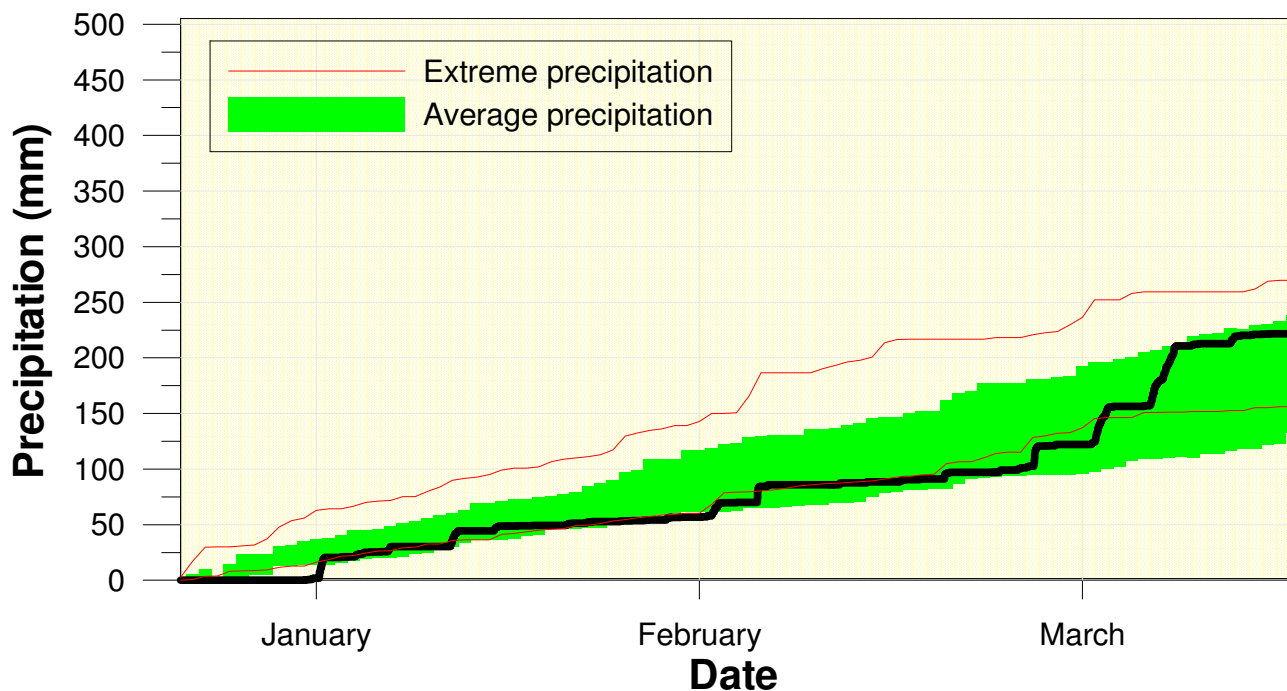
Temperature at the Waterloo Weather Station Winter 2010-2011



High/Low Temp: 13.6°C / -28.8°C
 Average Daily High: -1.8°C
 Average Daily Low: -10.6°C

Just a little colder than average for most of the winter but still overall it was within the average range.

Precipitation at the Waterloo Weather Station Winter 2010-2011



Total precipitation
 220.4 mm
 (average 184.5 mm)

It was a pretty dry winter until late February when we got enough to put us into the average range.