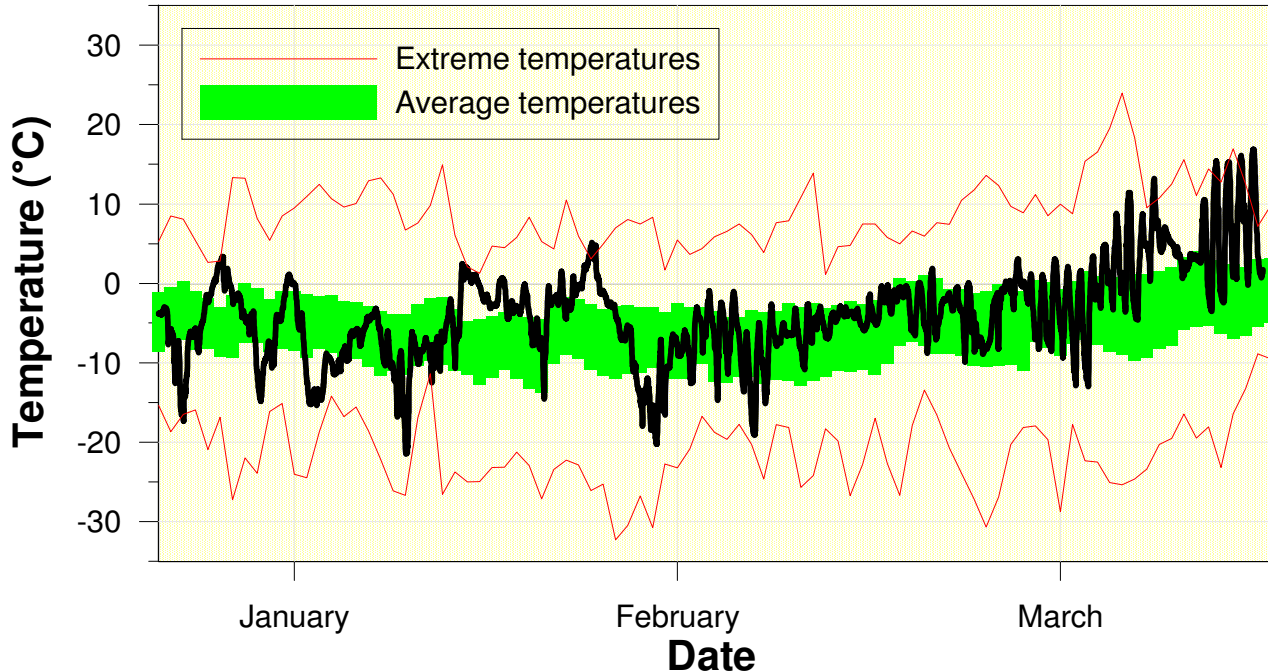


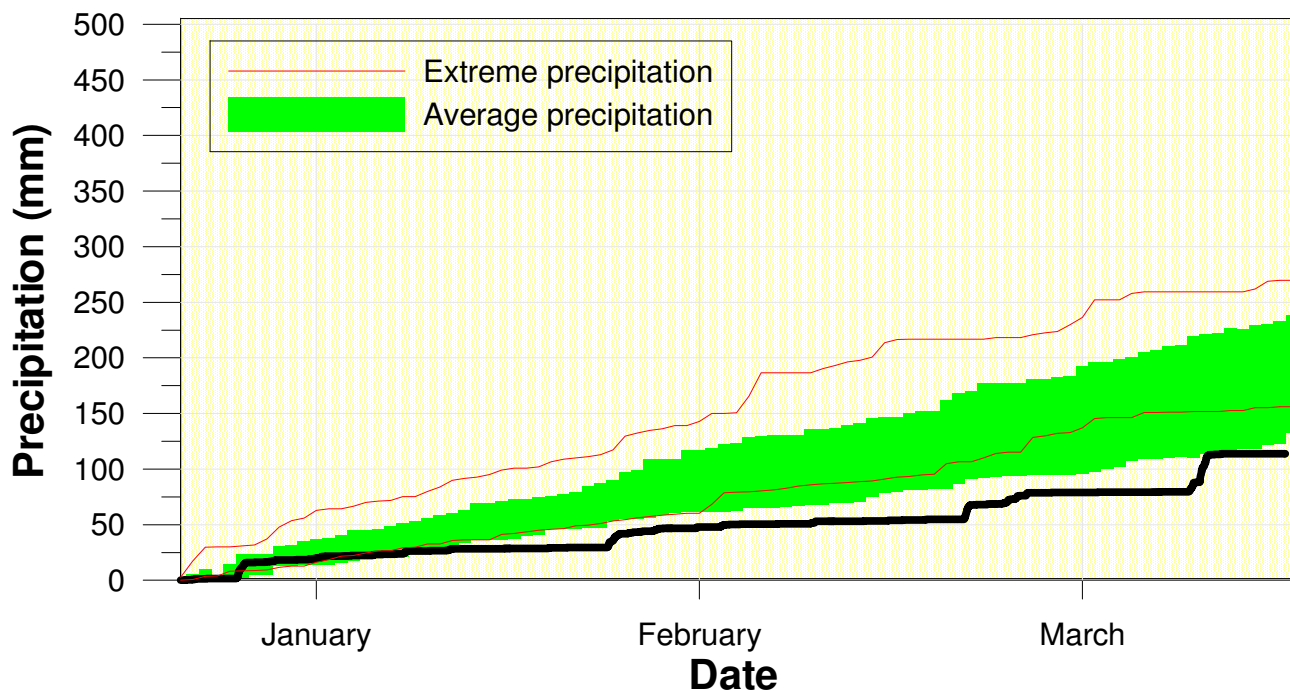
Temperature at the Waterloo Weather Station Winter 2009-2010



High/Low Temp: 16.9 °C / -21.5 °C
Average Daily High: -0.3 °C
Average Daily Low: -8.0 °C

Relatively few cold stretches combined with a really warm end to the season made for an overall above average winter for temperature.

Precipitation at the Waterloo Weather Station Winter 2009-2010



Total precipitation
113.2 mm
(average 184.5 mm)

Even a big storm with a week left in the season couldn't prevent it from being below average.