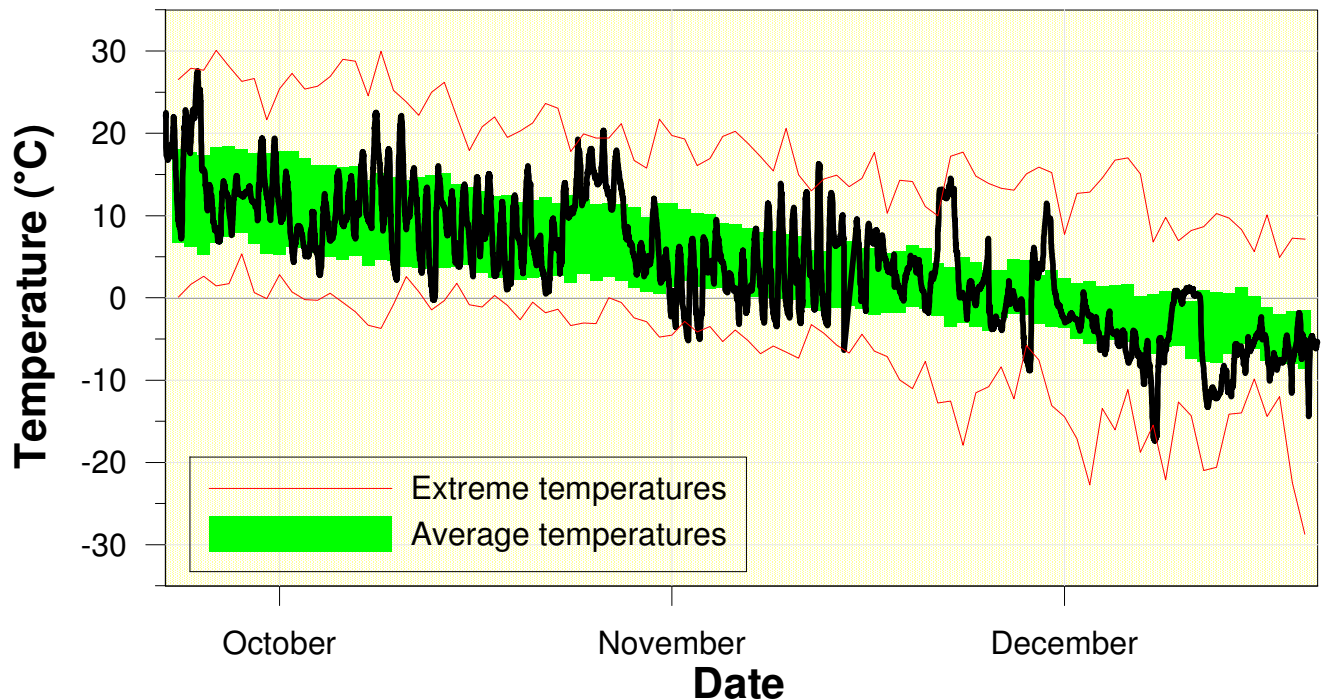


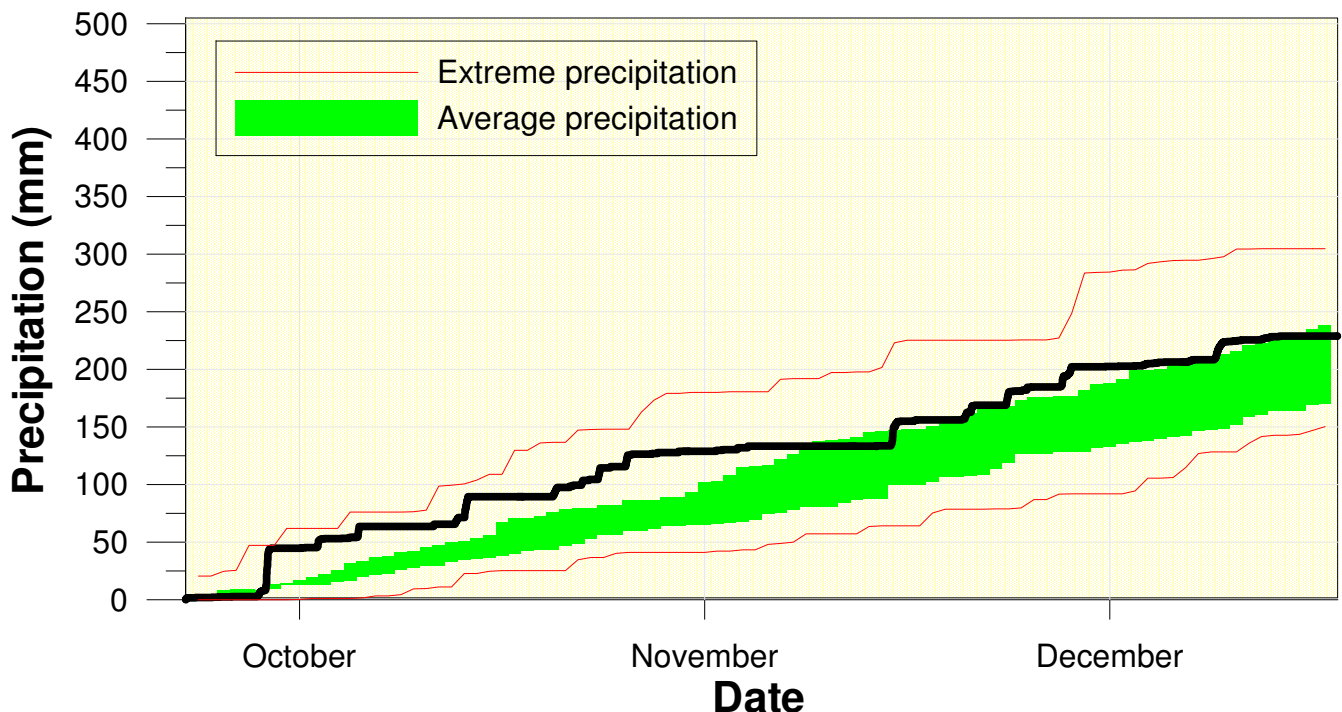
## Temperature at the Waterloo Weather Station Fall 2010



High/Low Temp: 27.6 °C/-17.4 °C  
Average Daily High: 8.8 °C  
Average Daily Low: -0.1 °C

A cold December brought the temperature back to average after a warm start.

## Precipitation at the Waterloo Weather Station Fall 2010



Total precipitation  
228.7 mm  
(average 220.9 mm)

Pretty even precipitation throughout the fall that resulted in the overall total being average.