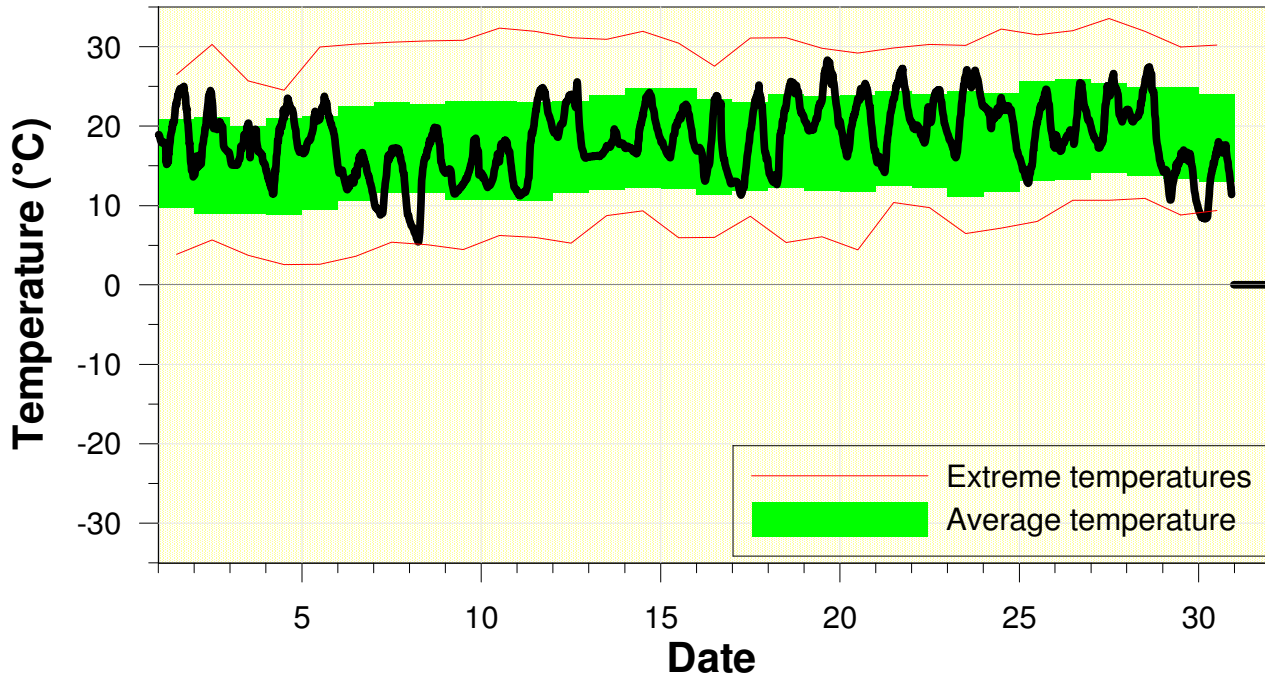


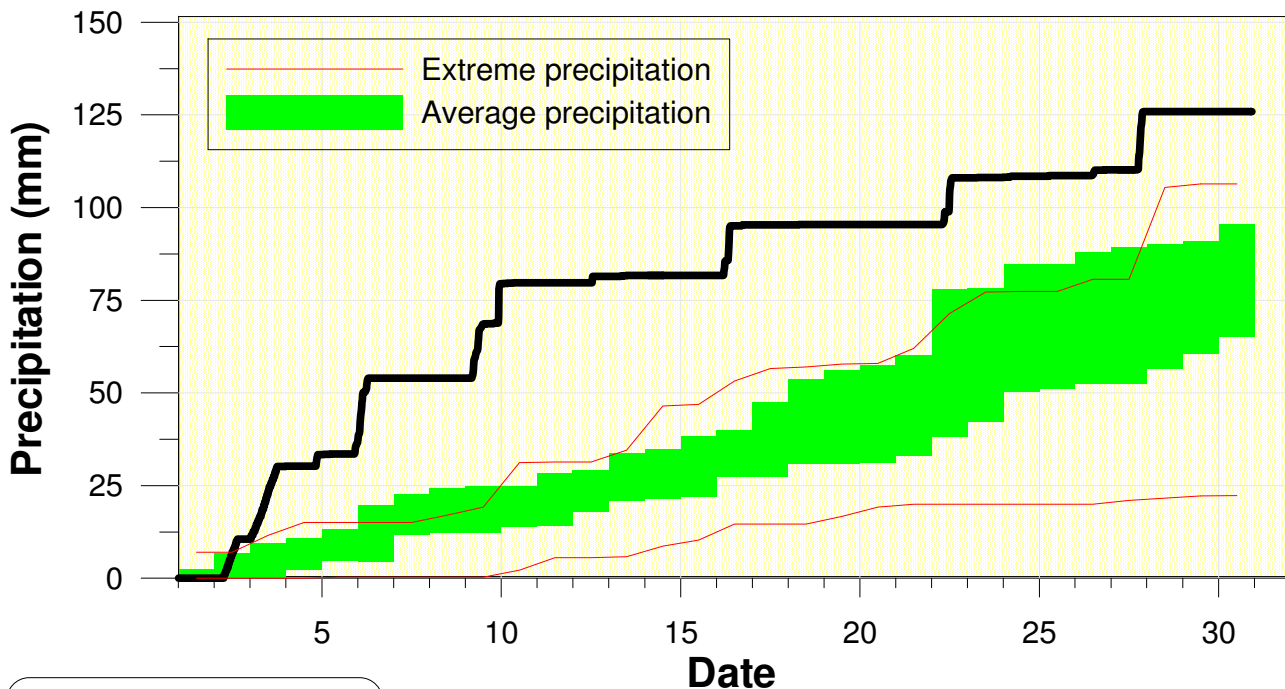
Temperature at the University of Waterloo Weather Station June 2010



High/Low Temp: 28.3°C/ 5.4°C
 Average Daily High: 23.1°C
 Average Daily Low: 13.6°C

A few cold days near the beginning of the month, but overall almost a degree above average.

Precipitation at the University of Waterloo Weather Station June 2010



Total precipitation
130.3 mm

The wettest June in over 40 years that was very consistent with a large storm about every week.