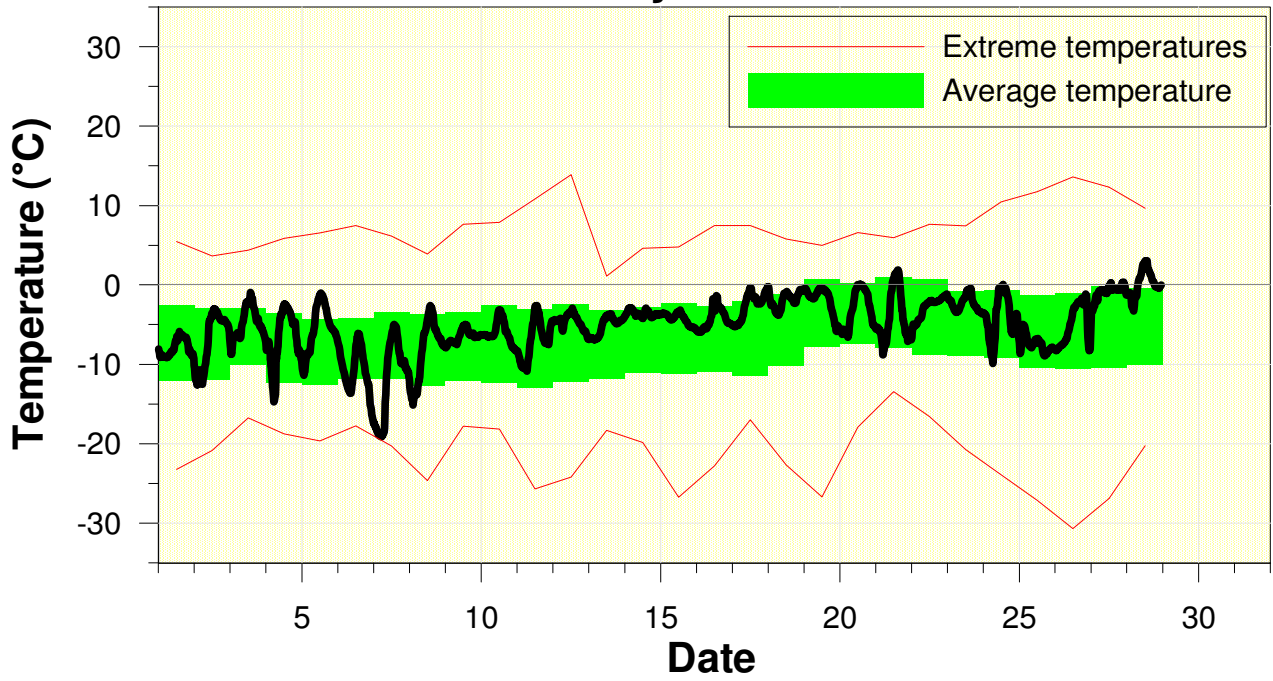


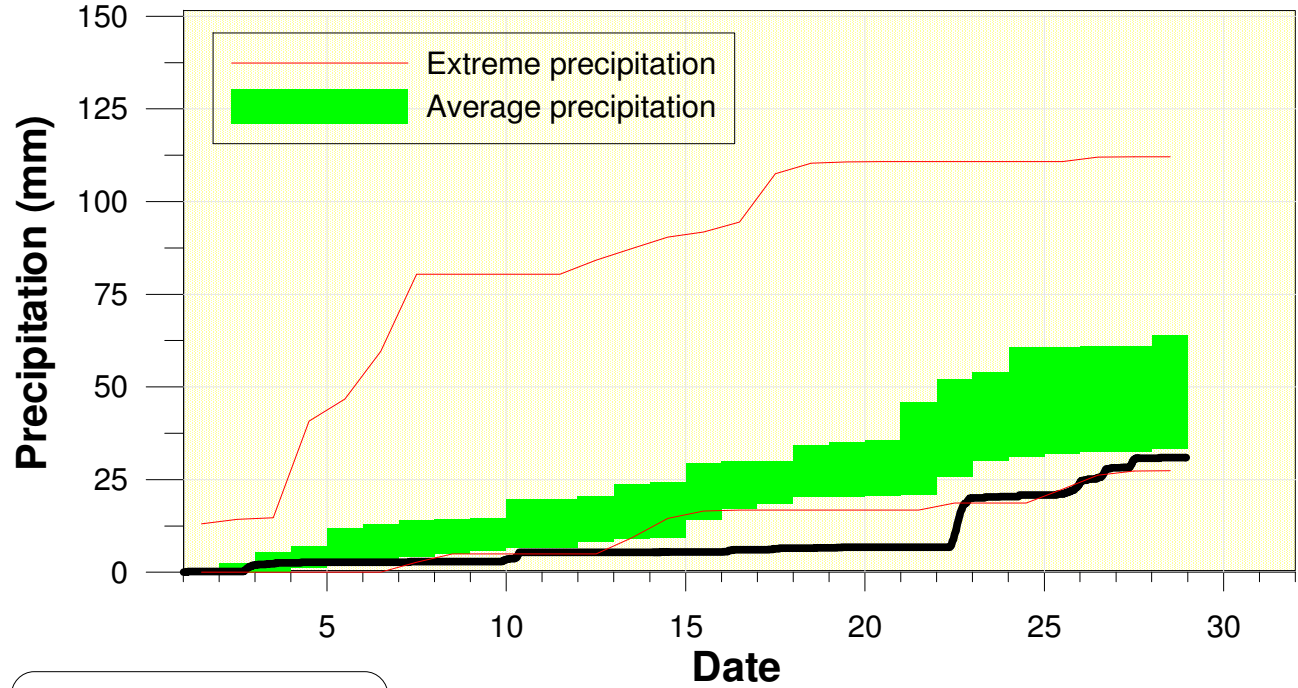
## Temperature at the University of Waterloo Weather Station February 2010



High/Low Temp: 3.1°C/ -19.1°C  
 Average Daily High: -2.0°C  
 Average Daily Low: -8.7°C

Apart from one or two days the rest of the month was entirely in the average range.

## Precipitation at the University of Waterloo Weather Station February 2010



Total precipitation  
30.9 mm

A few big storms in the last week was not enough to get the month out of the below average range.