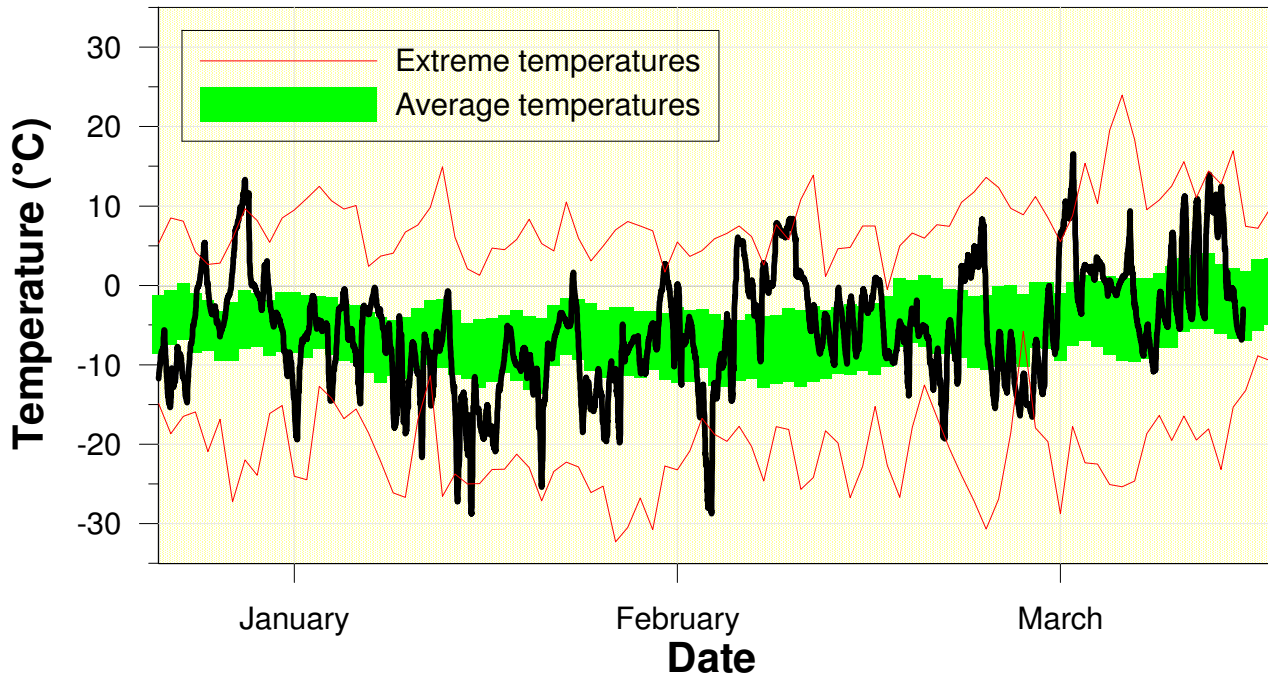


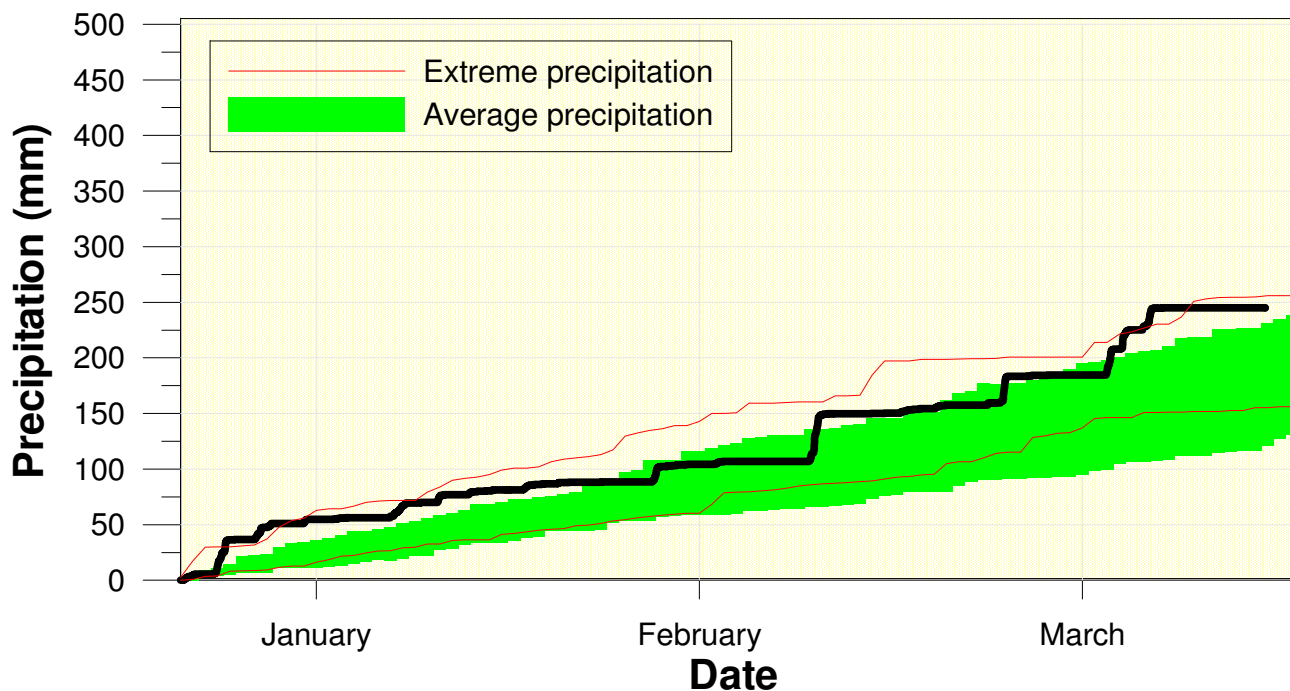
Temperature at the Waterloo Weather Station Winter 2008-2009



High/Low Temp: 16.6 °C / -28.8 °C
Average Daily High: -1.0 °C
Average Daily Low: -11.0 °C

A cold January offset a relatively warm February and March to make winter just a little below average.

Precipitation at the Waterloo Weather Station Winter 2008-2009



Total precipitation
244.2 mm
(average 184.5 mm)

Not quite the record, but still a very wet winter.