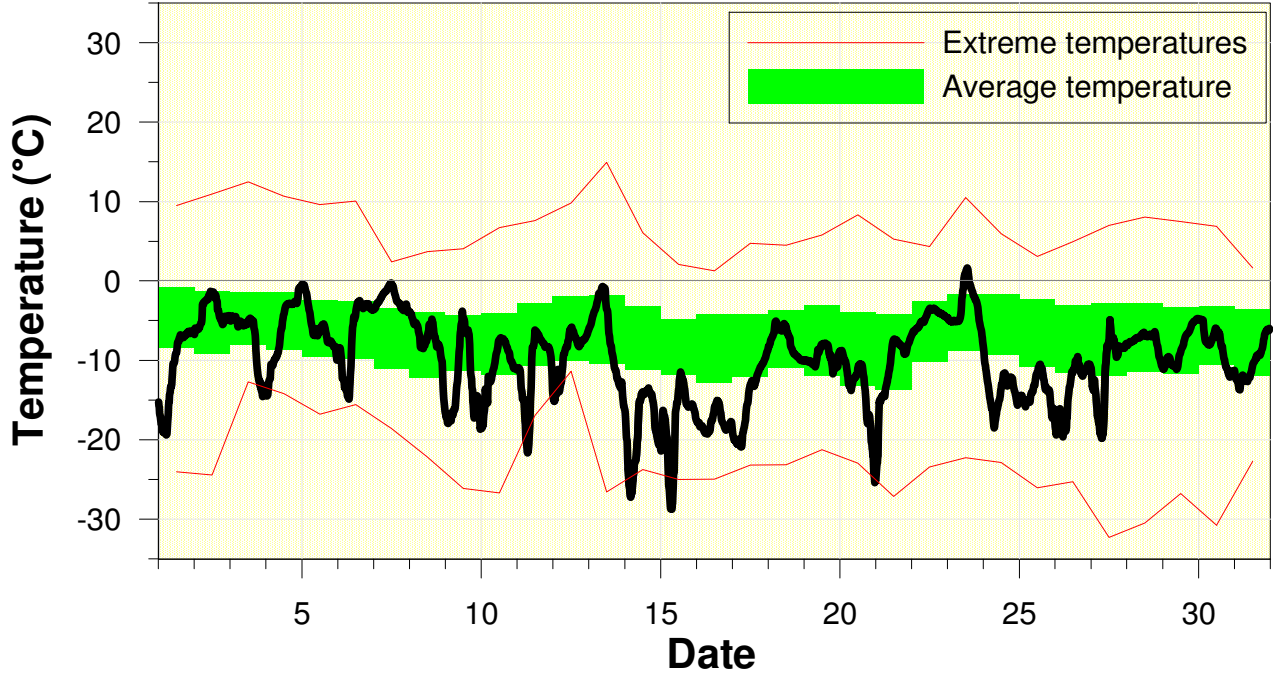


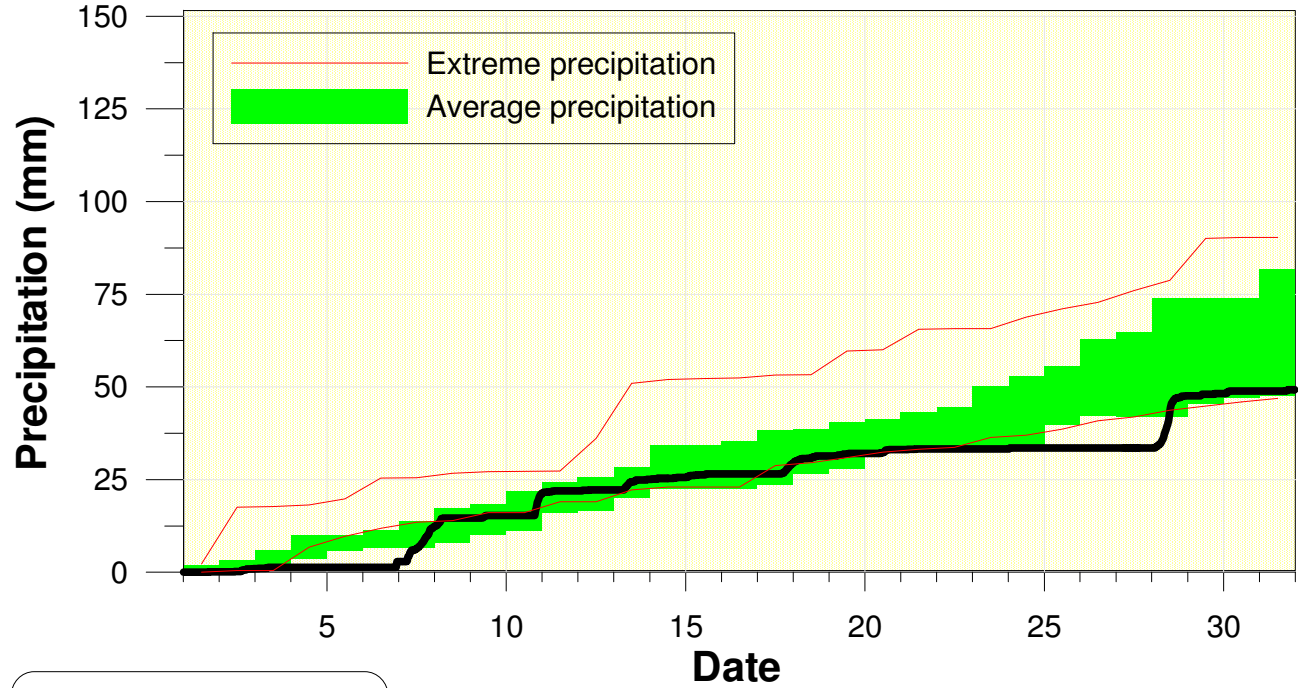
# Temperature at the University of Waterloo Weather Station January 2009



High/Low Temp: 1.6°C/ -28.8°C  
Average Daily High: -5.7°C  
Average Daily Low: -16.0°C

Two cold spells made it the coldest January in 15 years.

# Precipitation at the University of Waterloo Weather Station January 2009



Total precipitation  
49.2 mm

Just barely enough precipitation to get into the average range.