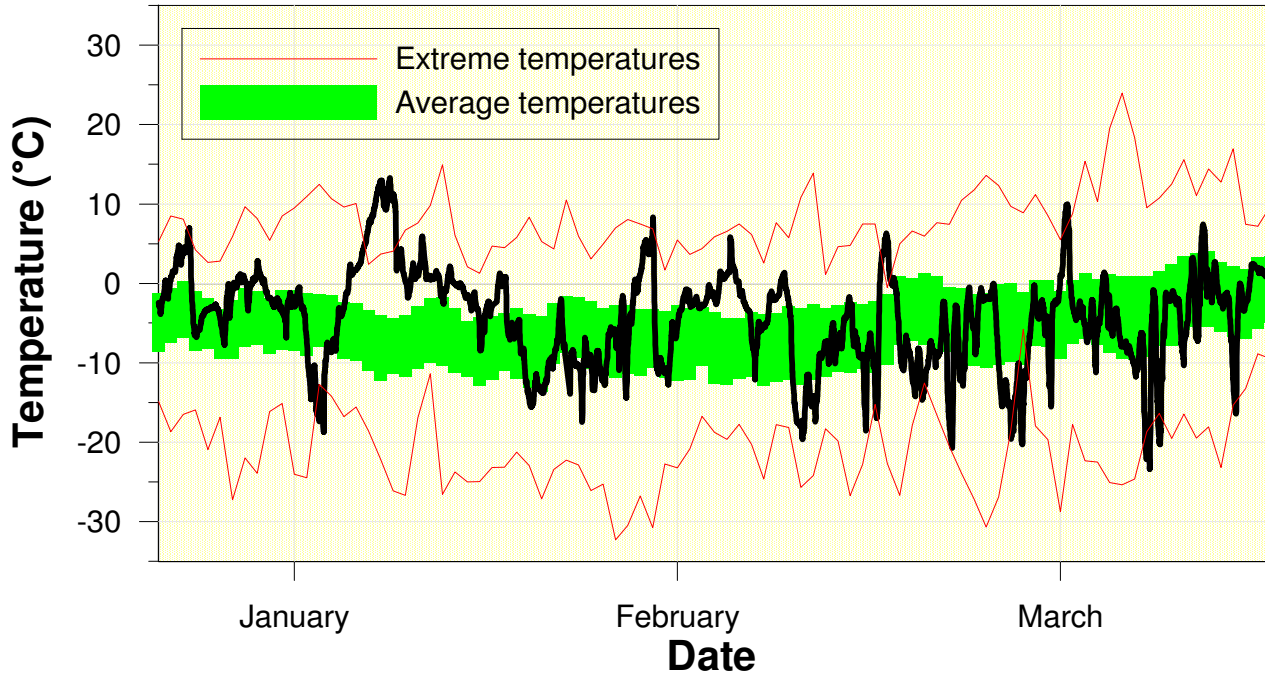


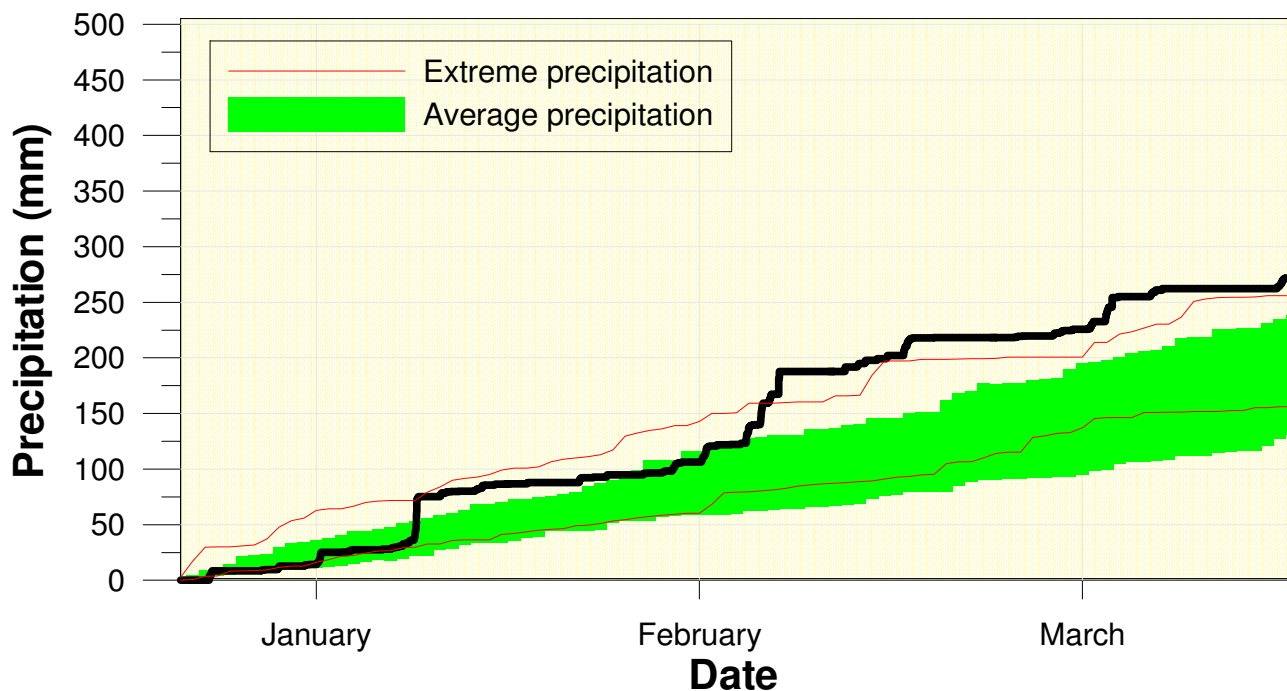
Temperature at the Waterloo Weather Station Winter 2007-2008



High/Low Temp: 13.3 °C / -23.4 °C
 Average Daily High: -0.7 °C
 Average Daily Low: -8.7 °C

Not a lot of consistent cold temperatures made for an overall warmer than average winter.

Precipitation at the Waterloo Weather Station Winter 2007-2008



Total precipitation
 268.9 mm
 (average 189.3 mm)

The most precipitation we have during the winter since 1973-74.