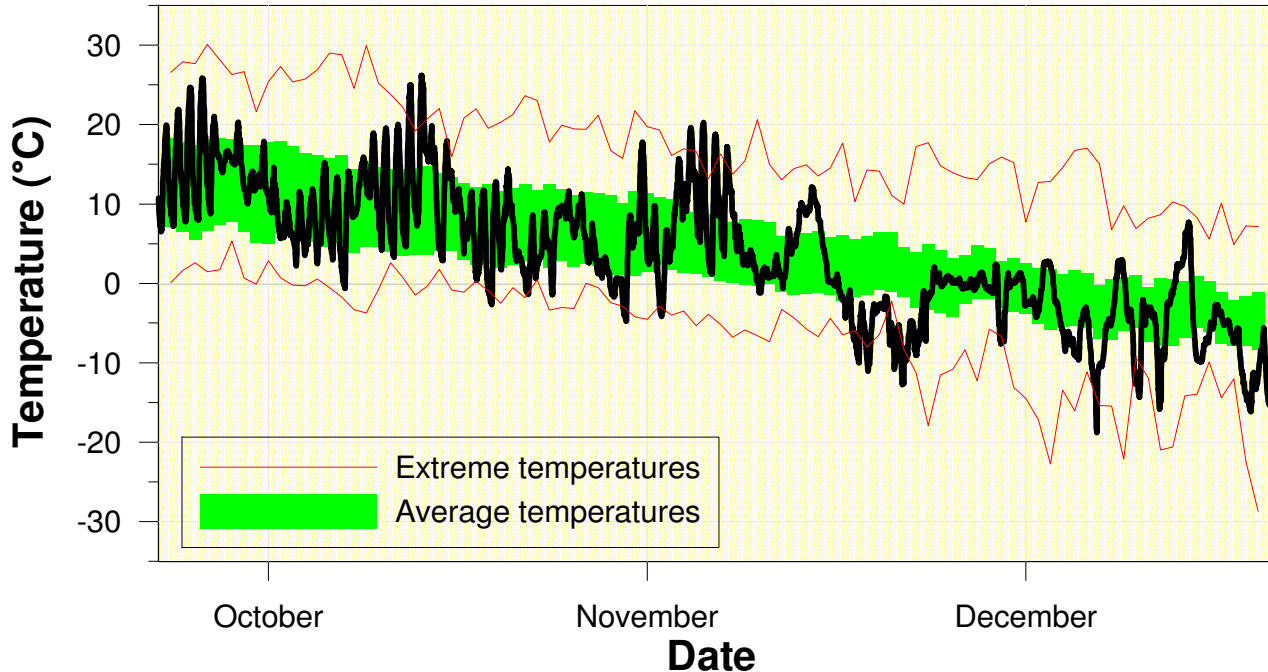


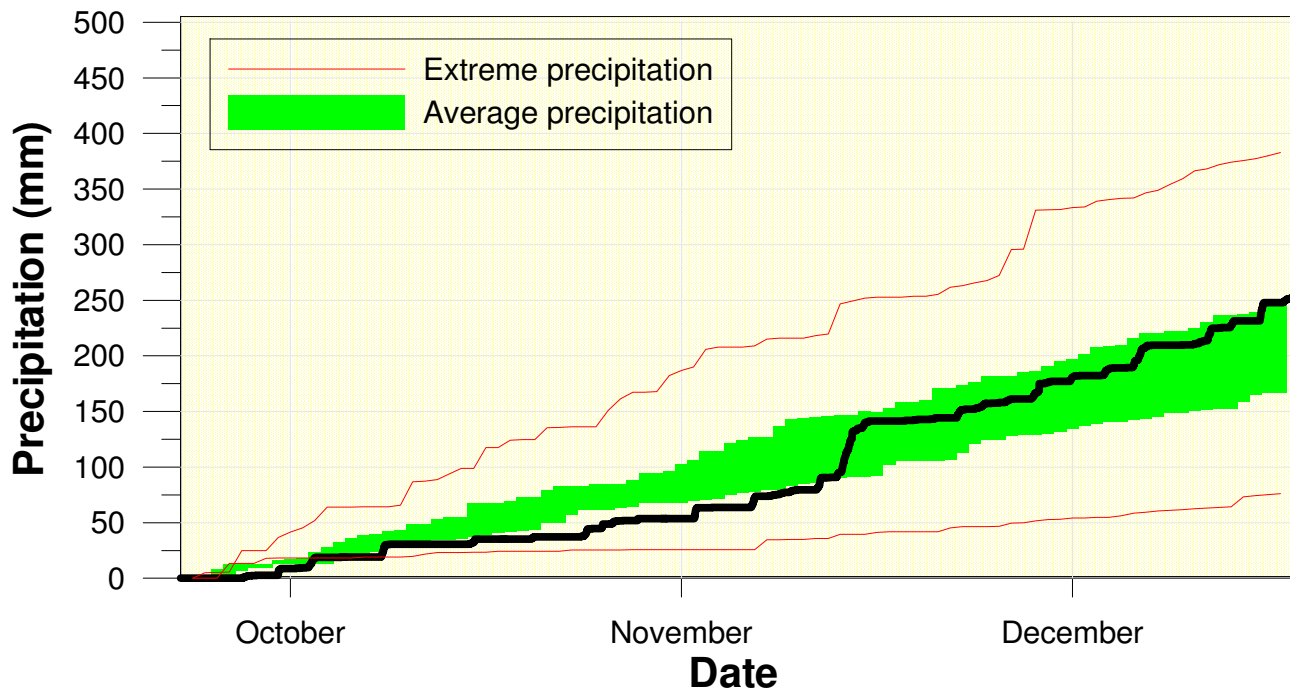
## Temperature at the Waterloo Weather Station Fall 2008



High/Low Temp: 26.2 °C/-18.8 °C  
 Average Daily High: 7.9 °C  
 Average Daily Low: -1.1 °C

After a few warm periods, the temperature got colder in mid-November and stayed there making for a colder than average fall.

## Precipitation at the Waterloo Weather Station Fall 2008



Total precipitation  
 250.4 mm  
 (average 222.5 mm)

Just barely enough to call it an above average fall for precipitation.