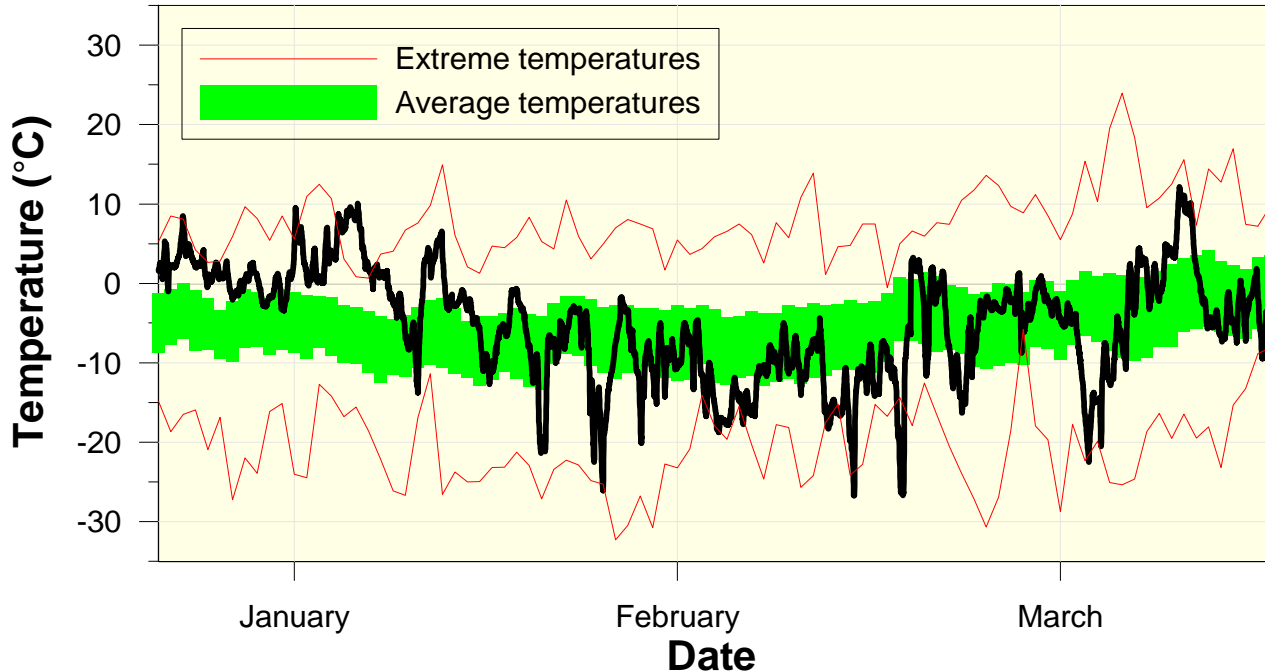


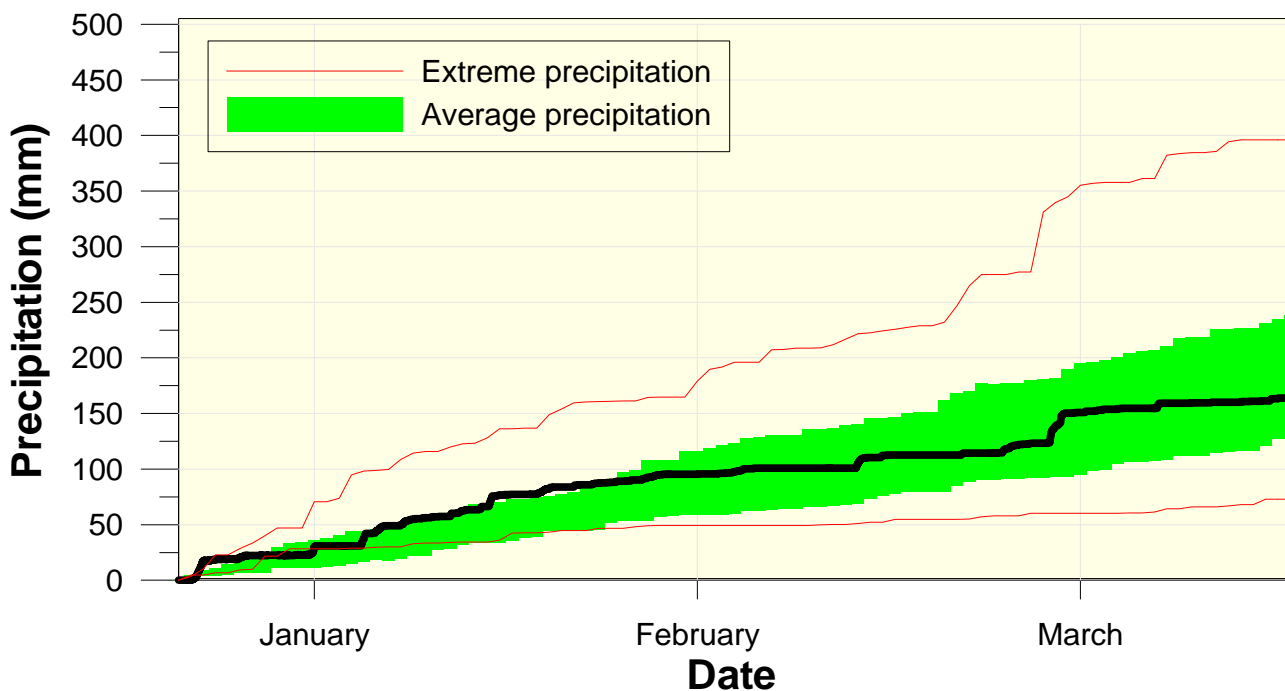
Temperature at the Waterloo Weather Station Winter 2006-2007



High/Low Temp: 12.1 °C / -26.8 °C
 Average Daily High: -1.7 °C
 Average Daily Low: -9.4 °C

An average winter overall, with a warm first month, a cold second month, and an average last month.

Precipitation at the Waterloo Weather Station Winter 2006-2007



Total precipitation
 162.8 mm
 (average 185.6 mm)

Pretty much an average season of precipitation.