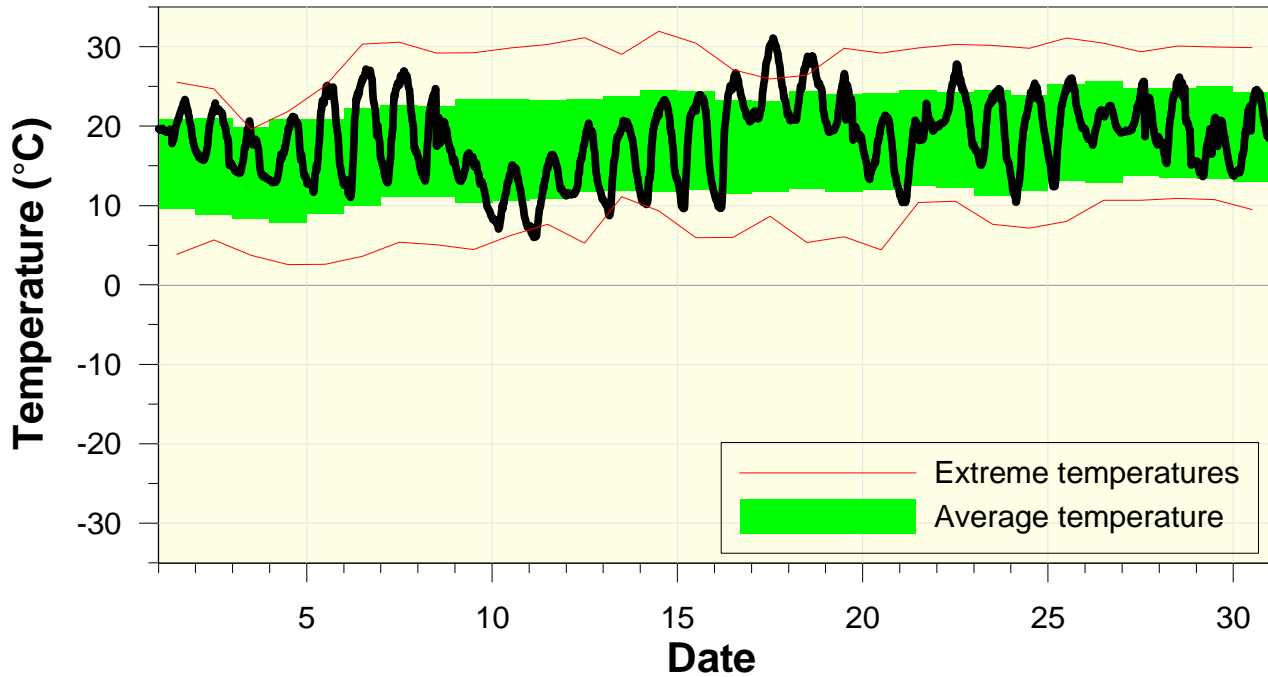


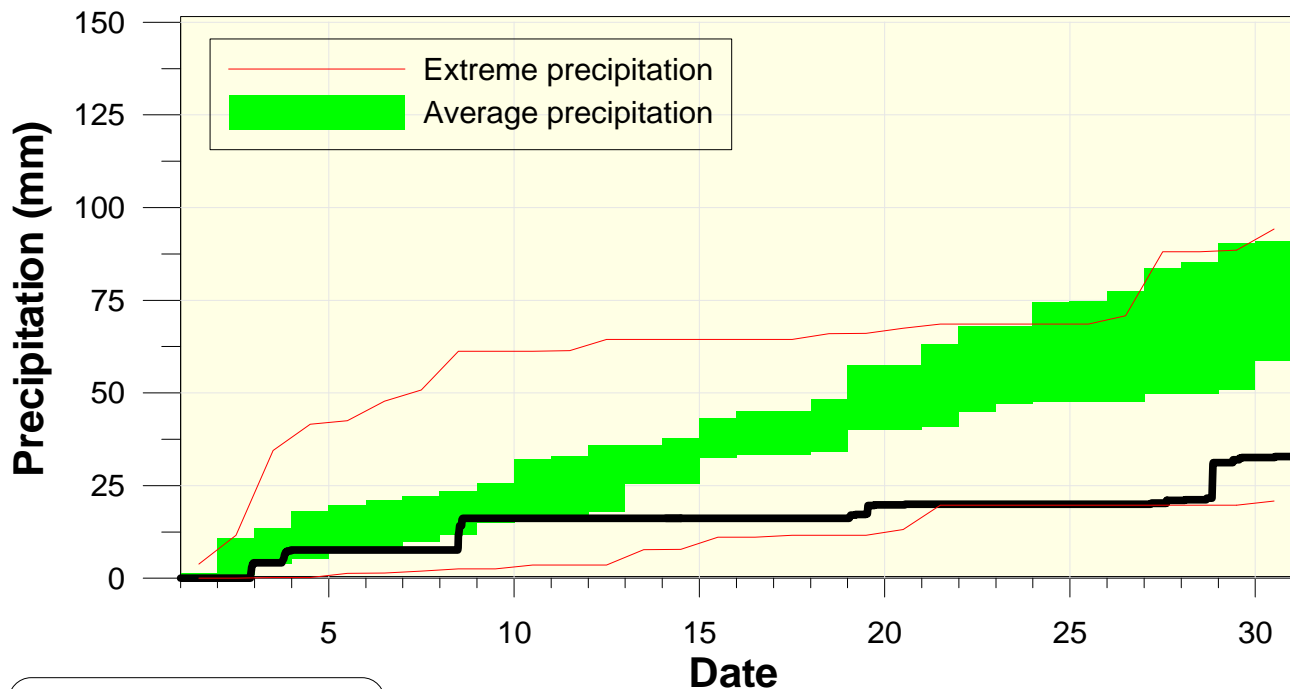
Temperature at the Waterloo Weather Station June 2006



High/Low Temp: 31.1 °C / 6.0 °C
 Average Daily High: 23.7 °C
 Average Daily Low: 13.1 °C

The higher than average daily lows caused this to be an above average month for temperature, despite the average daily highs being very close to average.

Precipitation at the Waterloo Weather Station June 2006



Total precipitation
32.8 mm

Less than half of the average precipitation fell this month.