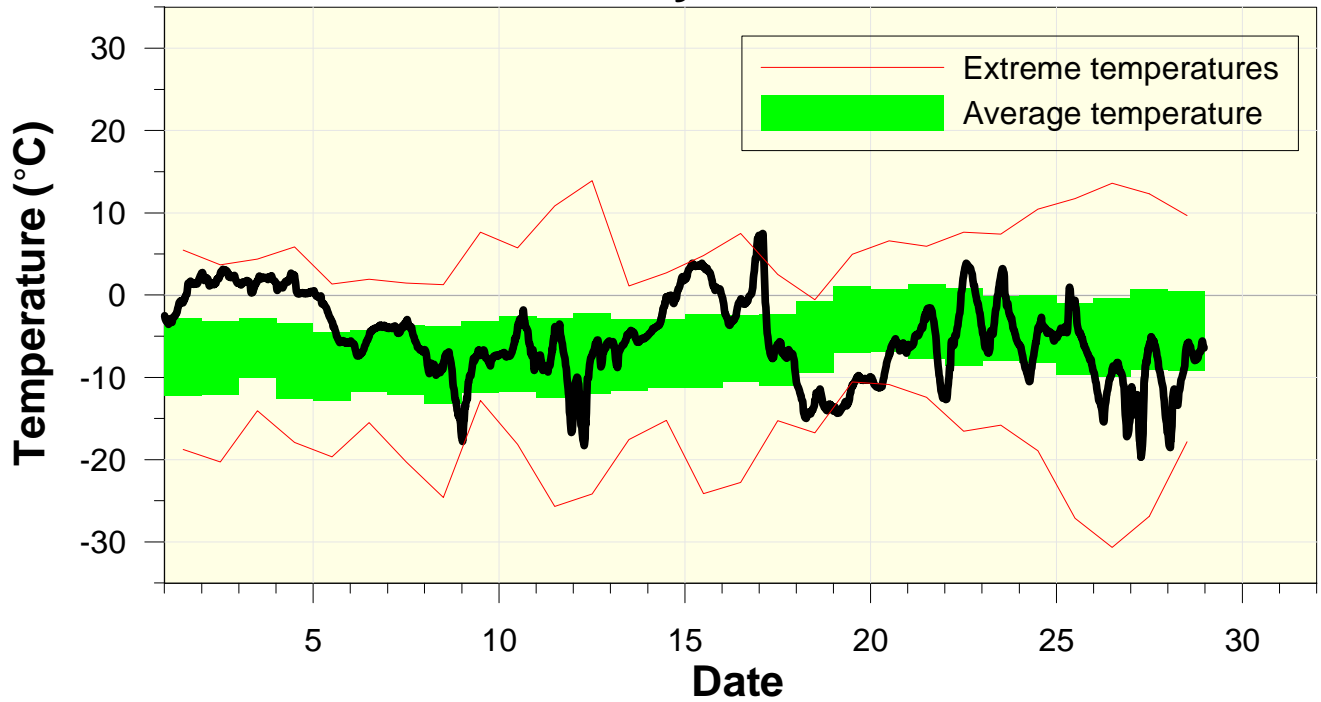


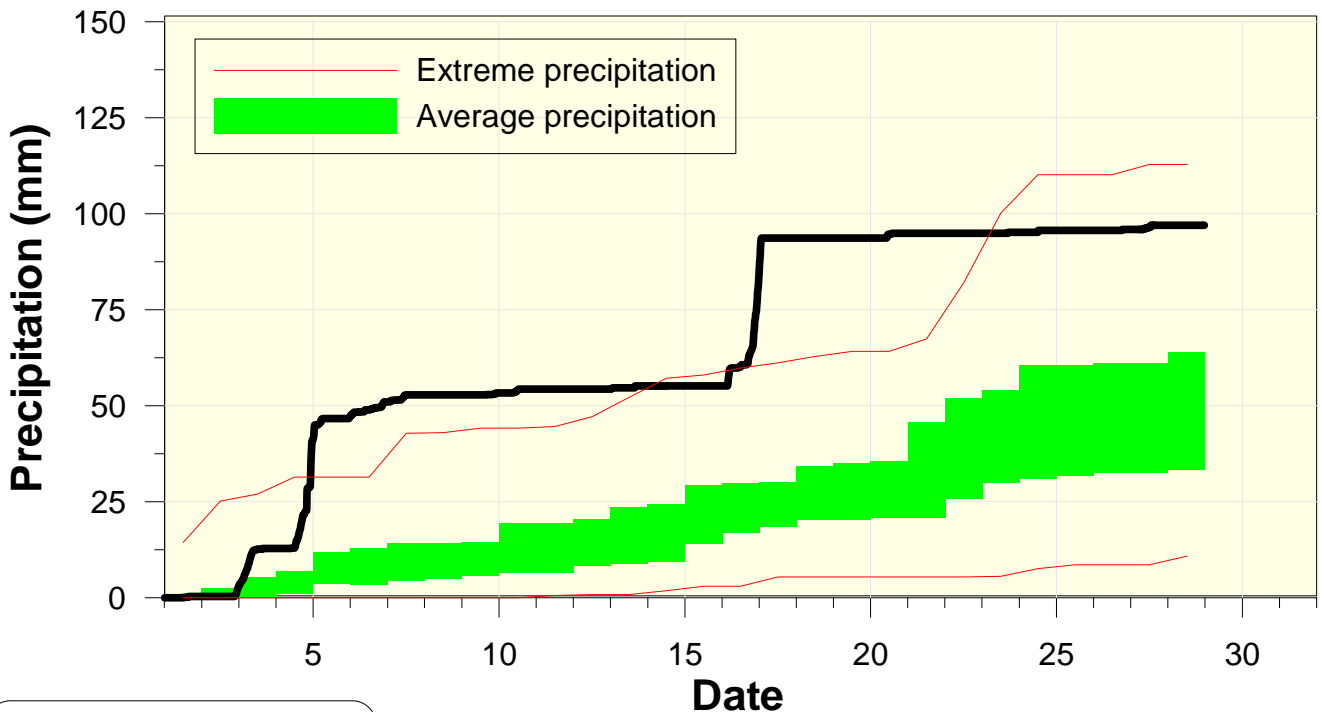
Temperature at the Waterloo Weather Station February 2006



High/Low Temp: 7.5°C/ -19.7°C
 Average Daily High: -1.5°C
 Average Daily Low: -9.8°C

Believe it or not it was actually a bit warmer than average for the month overall.

Precipitation at the Waterloo Weather Station February 2006



Total precipitation
96.9 mm

The two big storms of the month resulted in almost twice the average amount of precipitation.